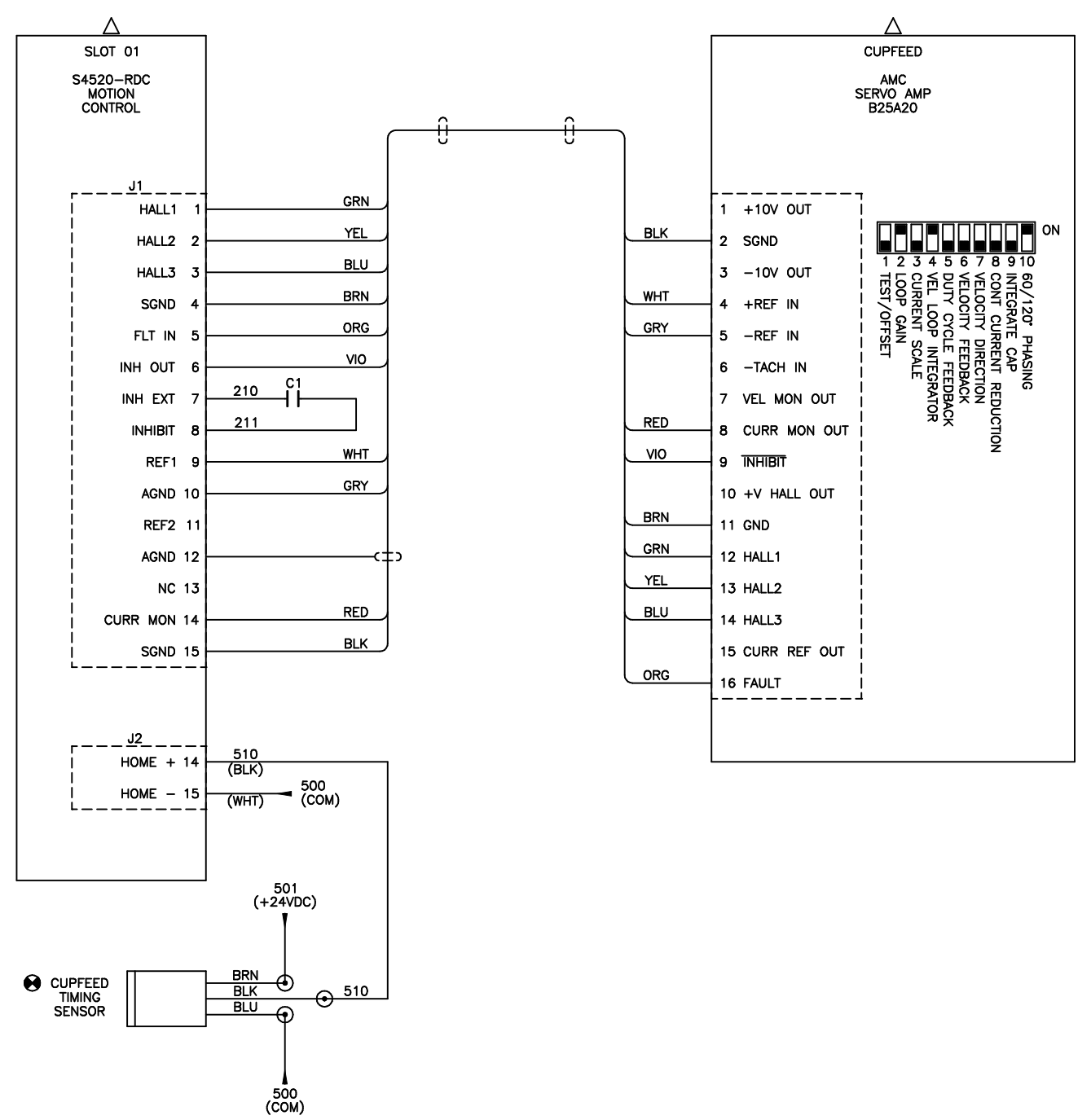


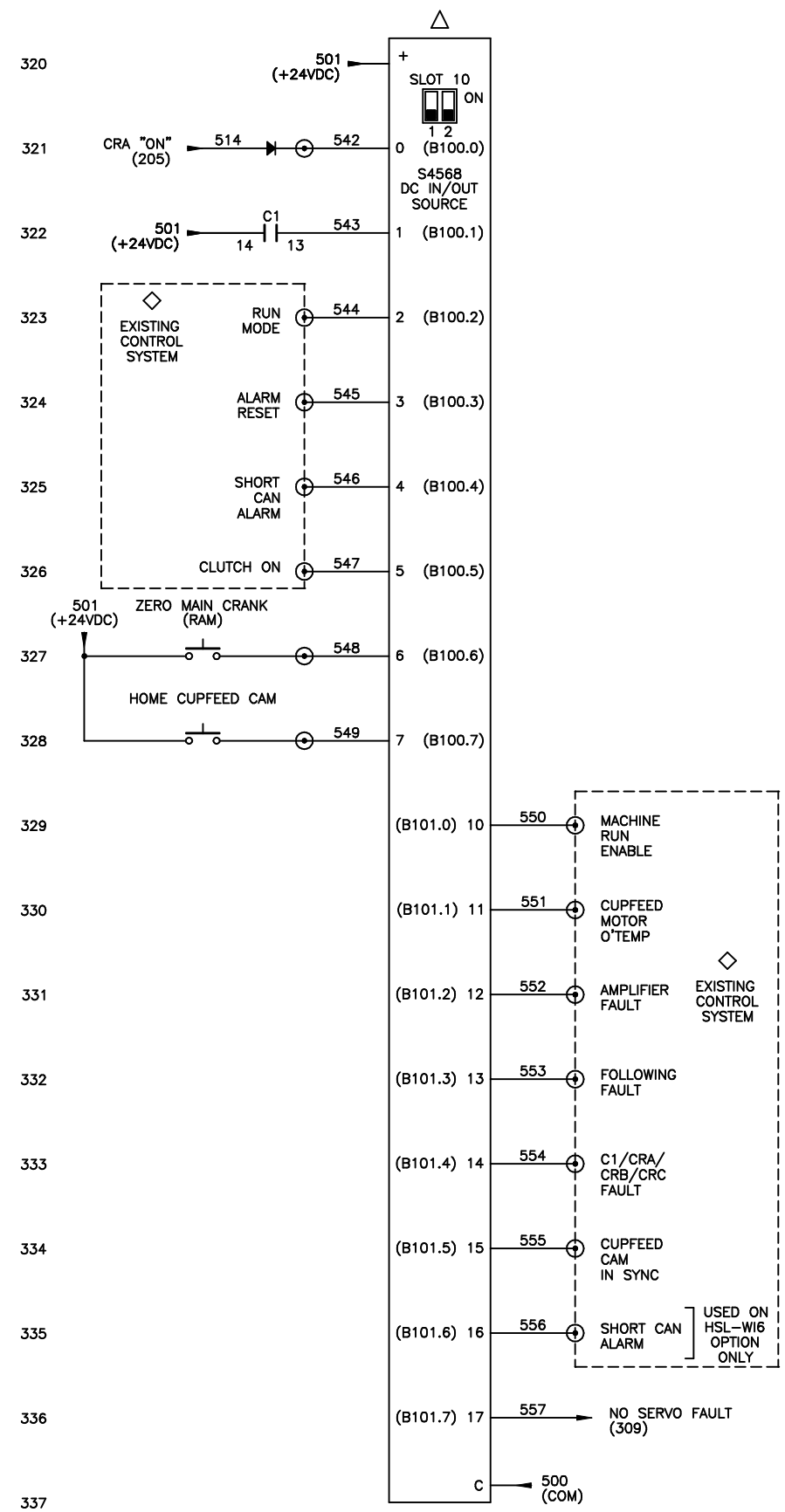
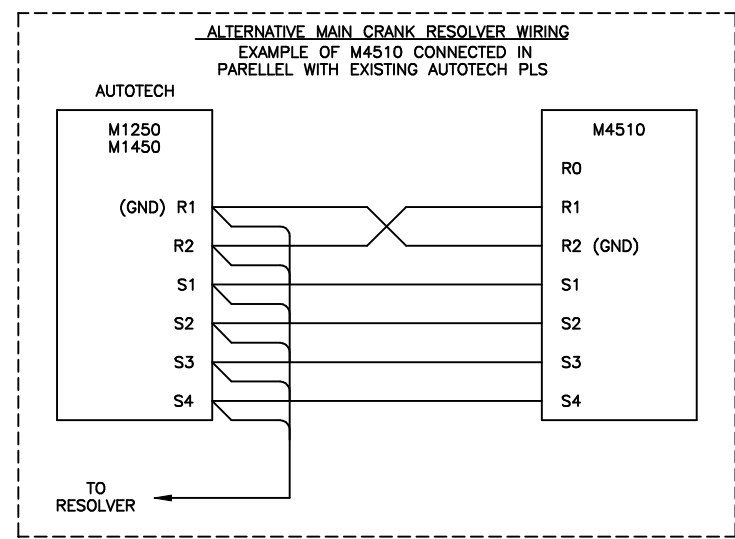
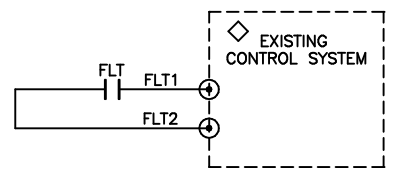
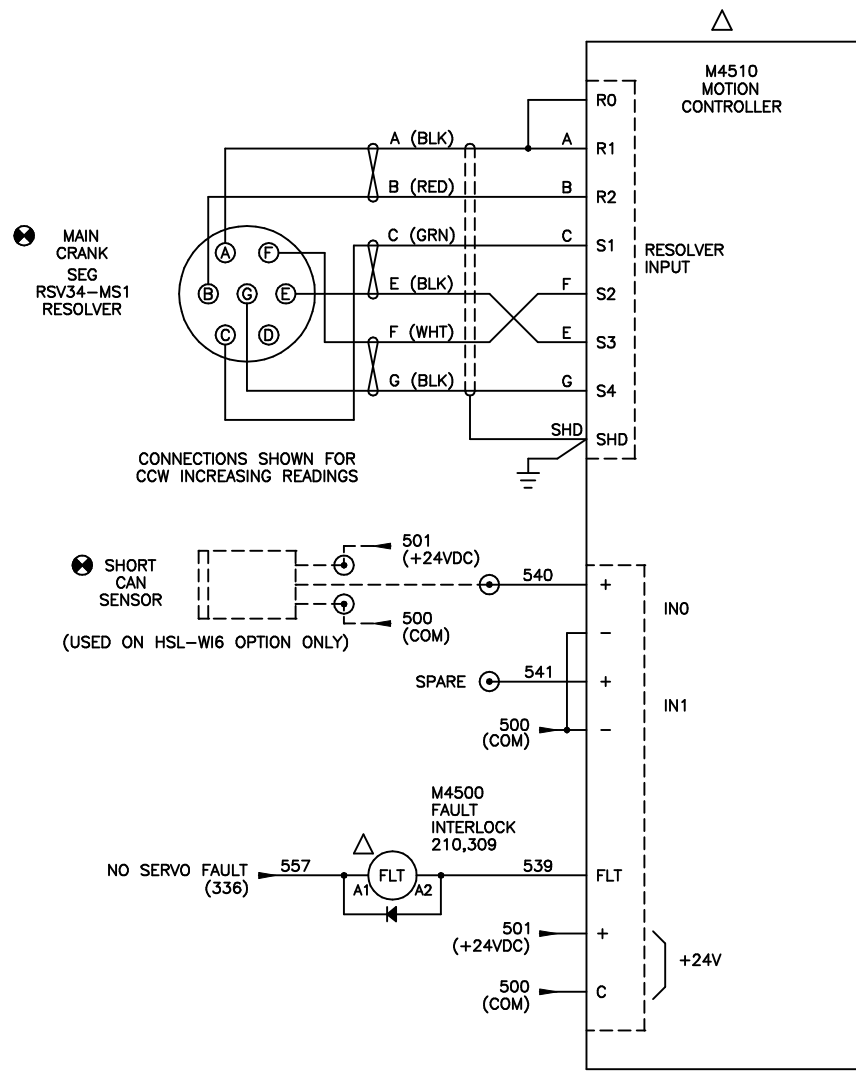
NOTES: 1) CRA, CRB AND CRC TO BE AEG SH04.31-NSW POSITIVELY GUIDED RELAYS. (NO SUBSTITUTES)
 2) ALL DIODES ARE IN4001.



CONFIDENTIAL
 This document is the property of Systems Engineering Assoc. Inc. The information contained herein is confidential and not to be reproduced, copied or disclosed to others. Drawing to be returned upon request.

SYSTEMS ENGINEERING ASSOCIATES, INC.
 ARVADA, COLORADO

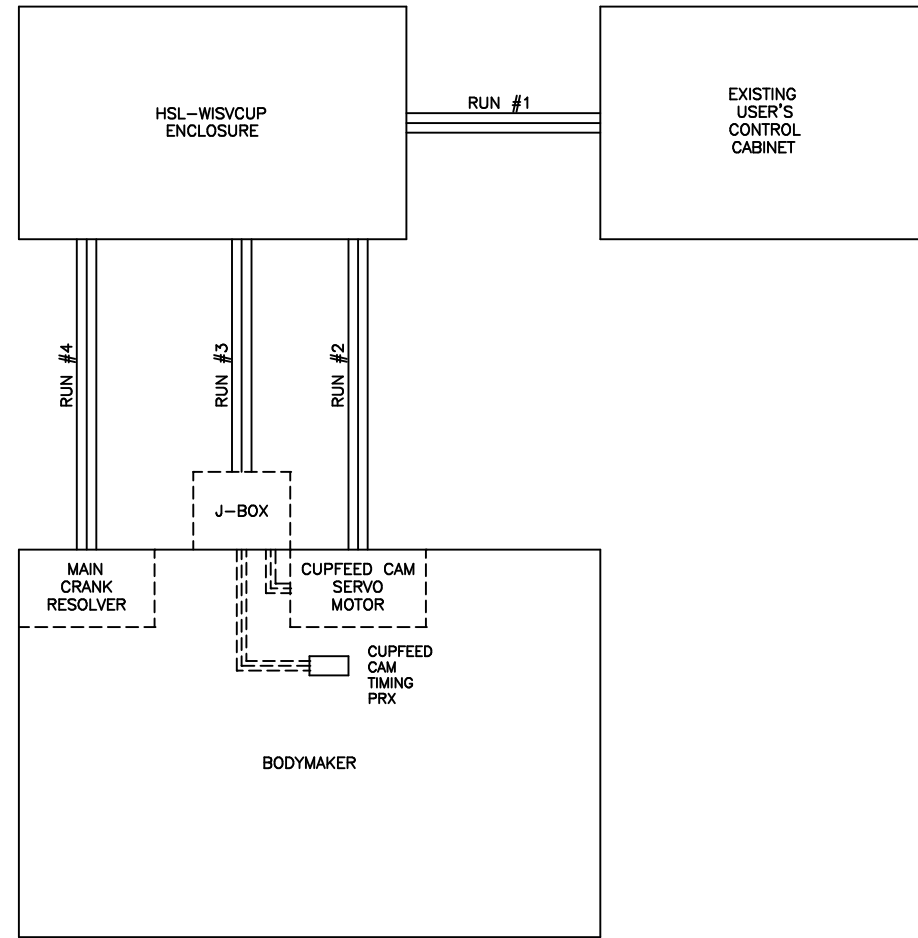
SCALE:	APPROVED:	DRAWN BY: KDV
DATE: 9-17-96		REVISED: 3-11-02
RAGSDALE B/M CUPFEED RETROFIT ELECTRICAL CONTROL SCHEMATIC		WO#
SYSTEMS ELECTRONICS GROUP		PT#
		DRAWING NUMBER 14-4206-10



CONFIDENTIAL
This document is the property of Systems Engineering Associates, Inc. The information contained herein is confidential and is not to be reproduced, copied or disclosed to others. Drawing to be returned upon request.

SYSTEMS ENGINEERING ASSOCIATES, INC.
ARVADA, COLORADO

SCALE:	APPROVED:	DRAWN BY: KDV
DATE: 9-17-96		REVISED: 3-11-02
RAGSDALE B/M CUPFEED RETROFIT ELECTRICAL CONTROL SCHEMATIC		WO#
		PT#
SYSTEMS ELECTRONICS GROUP		DRAWING NUMBER 14-4206-10



WIRE LIST					
RUN NO.	LOCATION	WIRE SIZE	COLOR	QYT.	WIRE NUMBER
1	HSL-WISVCUP TO EXISTING CONTROLS	#14	GREEN	1	GND
			WHITE	2	900, 900
			RED	2	801, 803
			WHITE/BLUE	1	500
			BLUE	6	501, 512, 513, 518, 519, 526
		YELLOW	2	FLT1, FLT2	
		#16	BLUE	9	544, 545, 546, 550, 551, 552, 553, 554, 555
2	SERVO	#14	4 COND. CBL	1	RED, WHT, BLK, GRN
3	HSL-WISVCUP TO MACHINE	#18	3 COND. SHD	1	500, 501, 510
		#22	8 COND. SHD	1	ORG, WHT, BLK, RED, YEL, BLU, BRN, GRN
4	RESOLVER	#18	3 TW PR. SHD	1	(RED/BLK) (GRN/BLK) (WHT/BLK)

<small>CONFIDENTIAL This document is the property of Systems Engineering Assoc. Inc. The information contained herein is confidential and not to be reproduced, copied or disclosed to others. Drawing to be returned upon request.</small>	SYSTEMS ENGINEERING ASSOCIATES, INC. ARVADA, COLORADO		
	SCALE:	APPROVED:	DRAWN BY: MJC
	DATE: 12-12-96		REVISED: 4-23-98
	RAGSDALE B/M CUPFEED RETROFIT WIRING DIAGRAM		WO#
	SYSTEMS ELECTRONICS GROUP		PT#
		DRAWING NUMBER	
		14-4206-11	