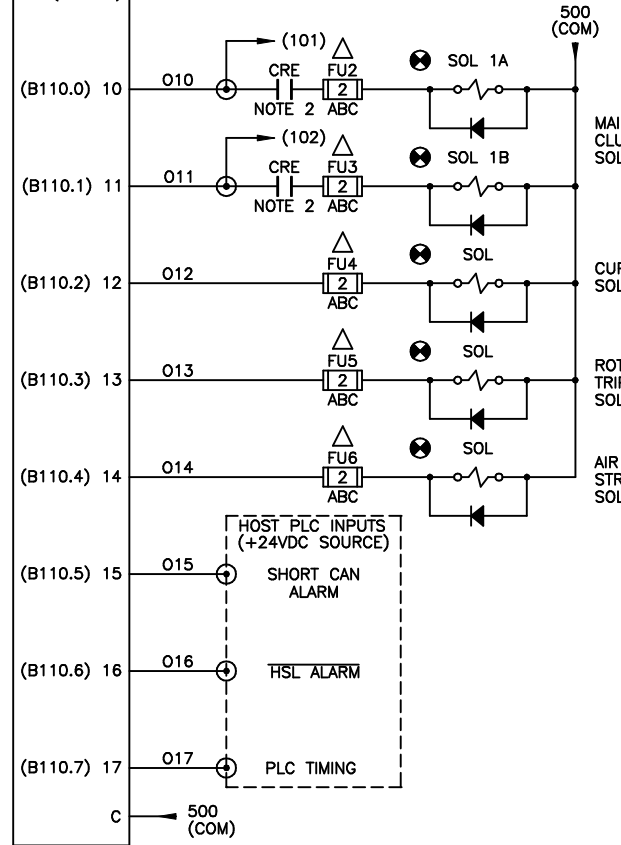
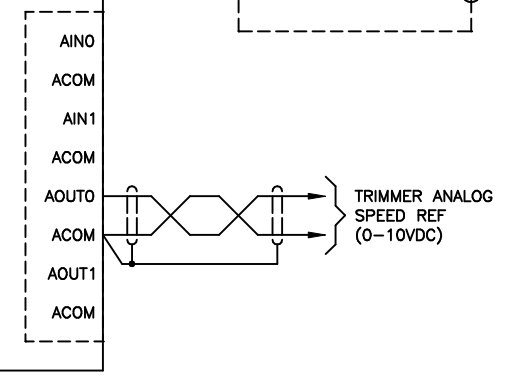


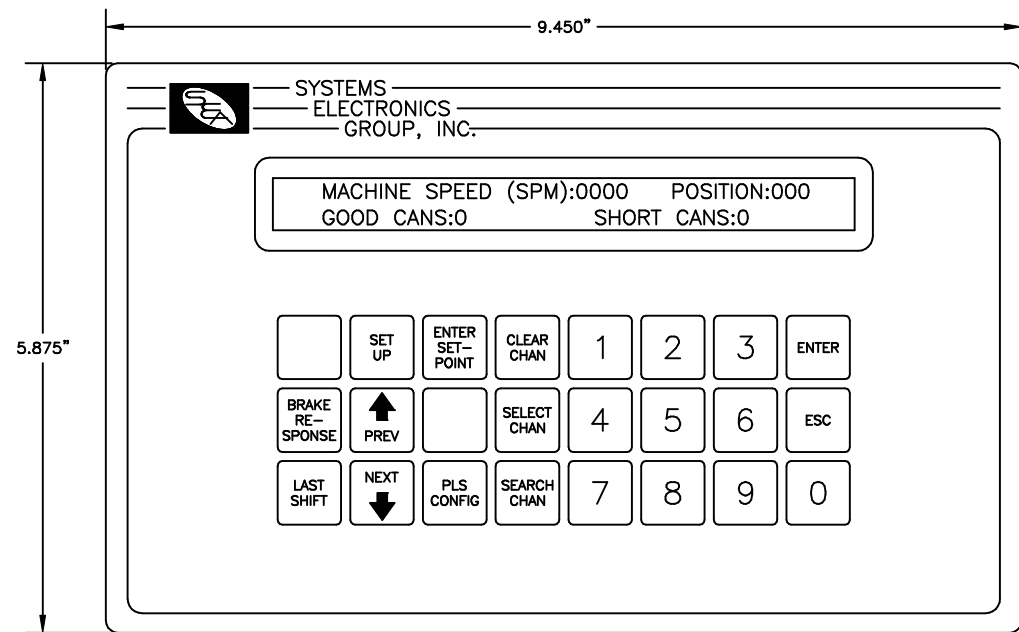
NOTE 1:
 (1) FOR SEG RSV34-MS1 RESOLVER, JUMPER R0 TO R1 ON RESOLVER INPUT.
 (2) FOR AUTOTECH RESOLVERS, INSTALL 47ohm, 1/2W RESISTOR BETWEEN R0 AND R1 ON RESOLVER INPUT.



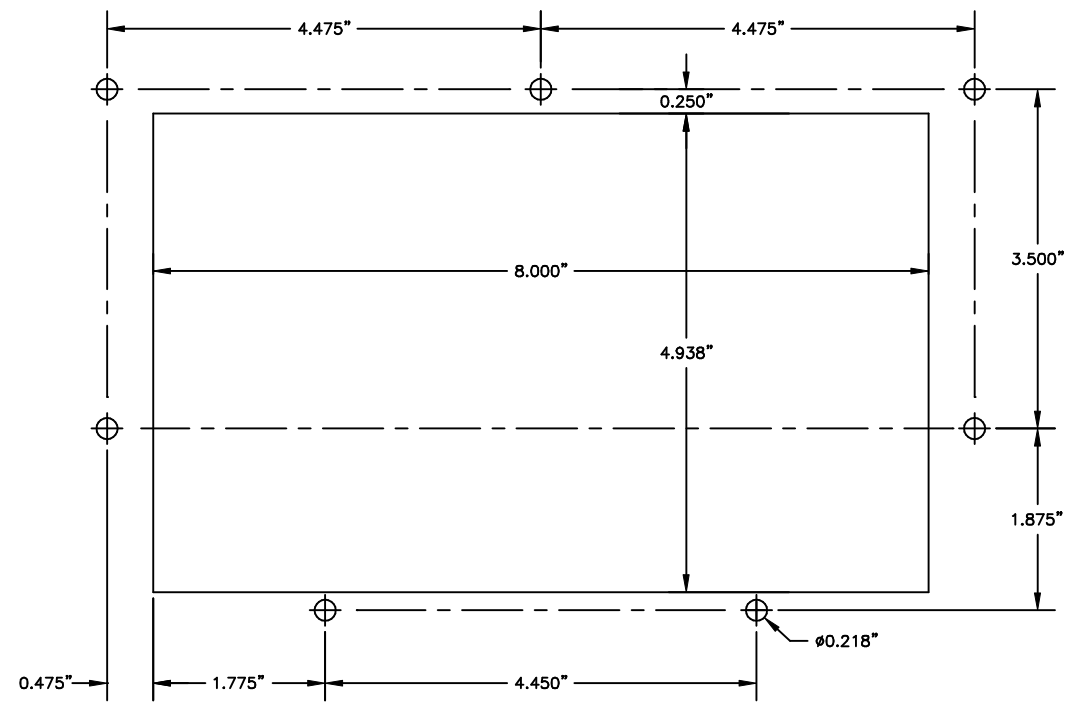
HSL ALARM SUMMATION:	
1)	DIE SENSOR FAIL
2)	TIMING SIGNAL FAIL
3)	CLUTCH OUTPUT NO.1 FAIL
4)	CLUTCH OUTPUT NO.2 FAIL
5)	NO RAM MOTION DETECTED
6)	RESOLVER FAULT (MOTION DETECTED WHEN STOPPED)
7)	BRAKE RESPONSE TOO LONG

NOTE 2:
IMPORTANT SAFETY WARNING!
 THE HSL-WI3 IS INTENDED AS A HIGH-SPEED LOGIC GATE TO PROVIDE CONSISTENT AND ACCURATE CLUTCH CONTROL. IT IS NOT DESIGNED AS A REDUNDANT, DUAL-PROCESSOR CLUTCH BRAKE SAFETY MODULE.
 THE HSL-WI3 MUST NOT BE THE ONLY MEANS OF CONTROLLING THE CUPPER CLUTCH MECHANISM. GOOD DESIGN PRACTICE DICTATES THE USE OF SAFETY INTERLOCKS ON ANY DEVICE THAT STARTS OR STOPS AUTOMATICALLY THAT CAN CAUSE PERSONNEL INJURY TO OPERATING OR MAINTENANCE PERSONNEL.
 THE HSL-WI3 MUST BE USED ONLY IN CONJUNCTION WITH INDUSTRY APPROVED SAFETY INTERLOCK CONTACTS, IMPLEMENTED IN ACCORDANCE WITH ANSI B11.1 SAFETY REQUIREMENTS; OTHERWISE, SERIOUS PERSONNEL INJURY MAY RESULT.

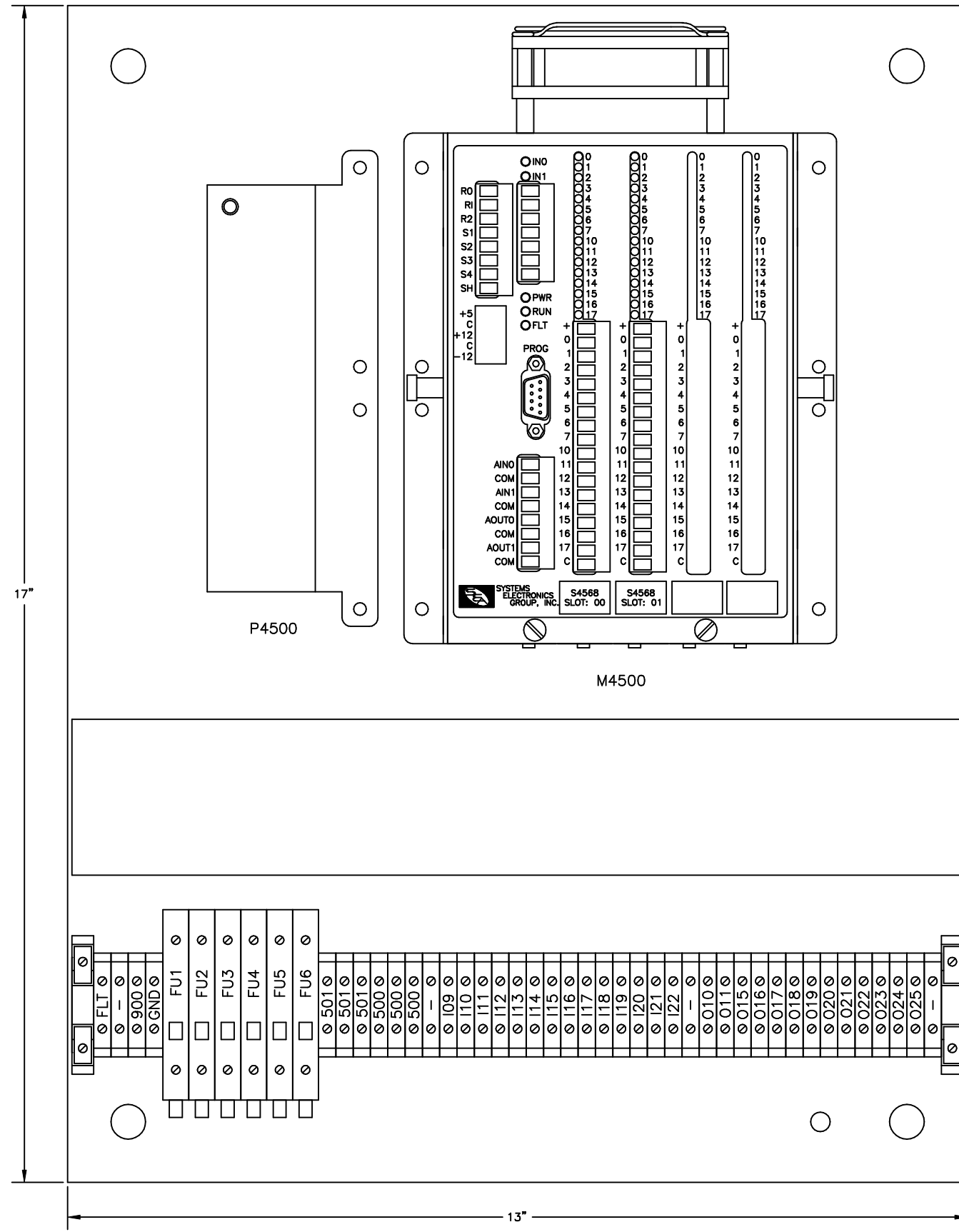
SYSTEMS ENGINEERING ASSOCIATES, INC. ARVADA, COLORADO			
SCALE:	APPROVED:	DRAWN BY: KDV	REVISIONS: 9-13-10
DATE: 3-17-04	HSL-WI3 ELECTRICAL CONTROL SCHEMATIC		WO#
SYSTEMS ELECTRONICS GROUP			PT#
			DRAWING NUMBER 14-4213-10



HSL-WI3 KEYPAD DISPLAY



RECOMMENDED PANEL CUT-OUT



HSL-WI3 PREWIRED BACK PANEL

CONFIDENTIAL This document is the property of Systems Engineering Assoc., Inc. The information contained herein is confidential and is not to be reproduced, copied or disclosed to others. Drawing to be returned upon request.	SYSTEMS ENGINEERING ASSOCIATES, INC. ARVADA, COLORADO		DRAWN BY: KDV
	SCALE: AS NOTED	APPROVED:	REVISED: 2-20-04
	DATE: 2-20-04	HSL-WI3 MECHANICAL LAYOUT	
	SYSTEMS ELECTRONICS GROUP		DRAWING NUMBER 14-4213-15