

- EQUIPMENT LOCATION LEGEND
- △ HSL-LTB/10/16 ENCLOSURE
 - ◇ EXISTING HOST PLC
 - ⊗ MACHINE MOUNTED COMPONENT
 - ⊠ BRK-LTB-SOL REJECT BLOW-OFF BRACKET

BIT2	BIT1	BIT0	ALARM DEFINITION
0	0	0	NO ALARM
0	0	1	LEAK DETECTION ARRAY FAULT
0	1	0	CAN JAM/BACK-UP AT DISCHARGE
0	1	1	TIMING SIGNAL FAILURE
1	0	0	EXCESSIVE LO/HI FIFO CORRECTIONS
1	0	1	BLOW-OFF PHOTO-EYE LENSES DIRTY
1	1	0	BAD CAN DID NOT REJECT
1	1	1	CAN PRESENCE PRX FAIL

CONFIDENTIAL

This document is the property of Systems Engineering Associates, Inc. The information contained herein is confidential and is not to be reproduced, copied or disclosed to others. Drawing to be returned upon request.

SYSTEMS ENGINEERING ASSOCIATES, INC.
ARVADA, COLORADO

SCALE: _____ APPROVED: _____ DRAWN BY: KDV

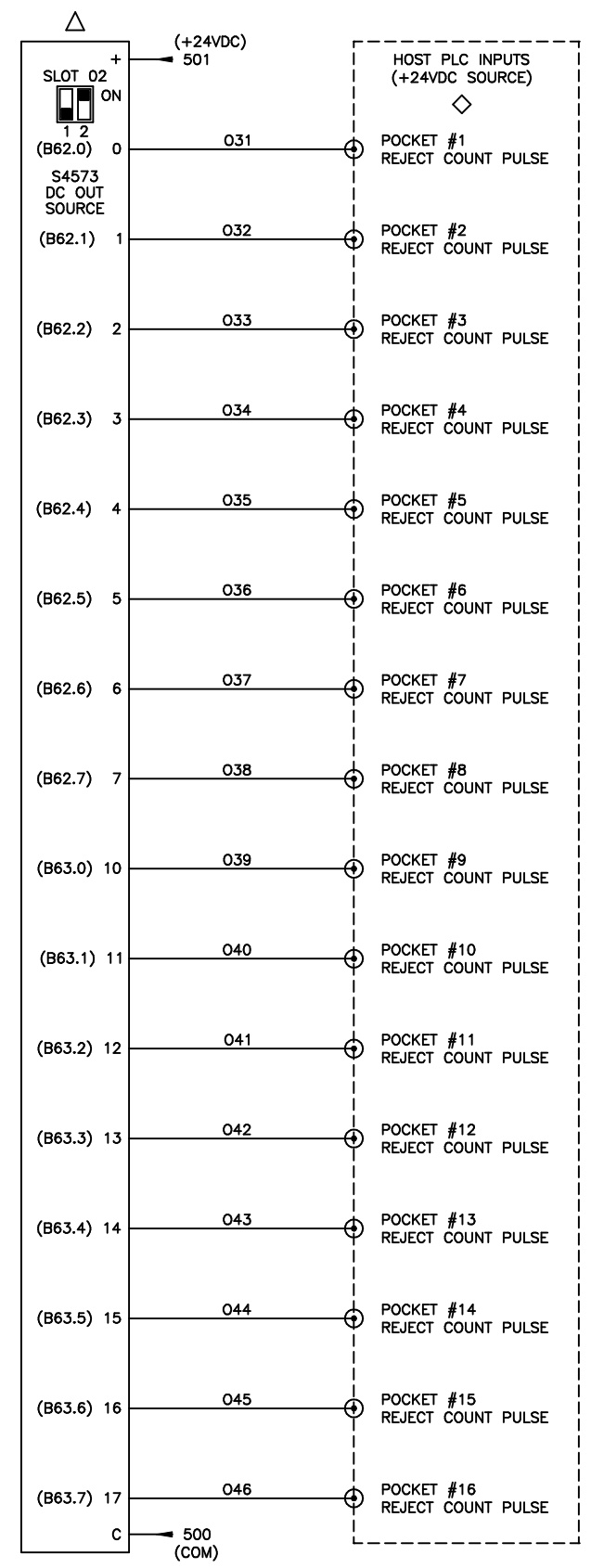
DATE: 10-22-98 REVISED: 3-13-18

HSL-LTA/LTS
ELECTRICAL CONTROL SCHEMATIC

WO# _____
PT# _____

SYSTEMS ELECTRONICS GROUP
DRAWING NUMBER 14-4706-10

200
201
202
203
204
205
206
207
208
209
210
211
212
213
214
215
216
217
218
219



NOTE: THE FOLLOWING COUNT PULSE OUTPUTS ARE ACTIVE
ON THE FOLLOWING RESPECTIVE HSL-LT8/10/16 SYSTEMS

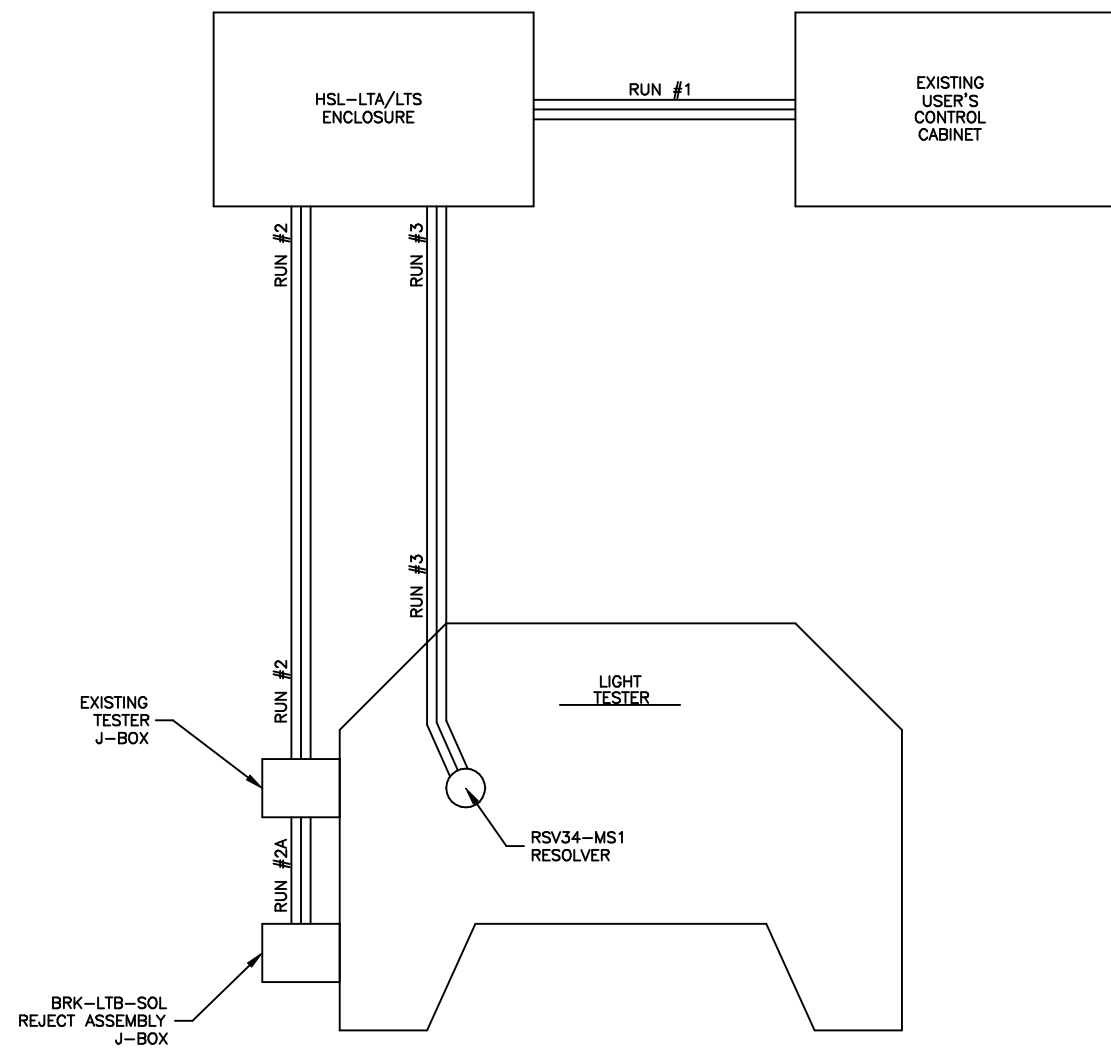
HSL-LT8: POCKET #1(O31) THRU POCKET #8(O38)

HSL-LT10: POCKET #1(O31) THRU POCKET #10(O40)

HSL-LT16: POCKET #1(O31) THRU POCKET #16(O46)

220
221
222
223
224
225
226
227
228
229
230
231
232
233
234
235
236
237
238
239

CONFIDENTIAL This document is the property of Systems Engineering Assoc. Inc. The information contained herein is confidential and is not to be reproduced, copied or disclosed to others. Drawing to be returned upon request.	SYSTEMS ENGINEERING ASSOCIATES, INC. ARVADA, COLORADO		
	SCALE:	APPROVED:	DRAWN BY: WGD
	DATE: 10-22-98		REVISED: 6-18-01
	HSL-LTA/LTS ELECTRICAL CONTROL SCHEMATIC		WO#
SYSTEMS ELECTRONICS GROUP			DRAWING NUMBER 14-4706-10



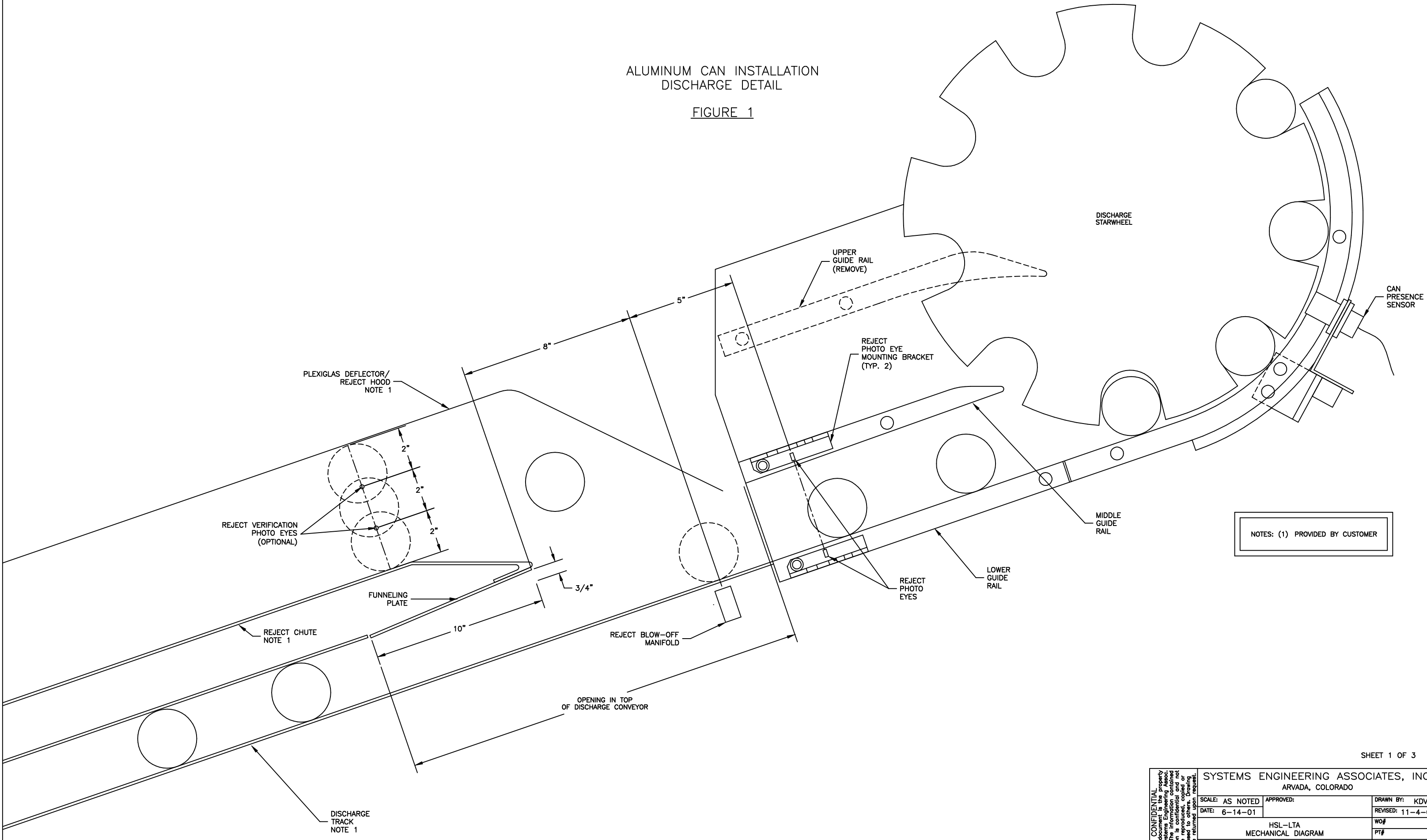
WIRE LIST					
RUN NO.	LOCATION	WIRE SIZE	COLOR	QYT.	WIRE NUMBER
1	HSL-LTA/LTS TO EXISTING CONTROL CABINET	#14	GREEN	1	GND
			WHITE	1	900
			RED	1	L
			WHT/BLU	2	200, 500
			BLUE	34	201, 202, 203, 501, 108, 109, 120, 121, 122, 015, 016, 017, 022, 023, 024, 025, 031, 032, 033, 034, 035, 036, 037, 038, 039, 040, 041, 042, 043, 044, 045, 046, FLT1, FLT2
2	HSL-LTA/LTS TO TESTER J-BOX	#14	WHT/BLU	1	500
			BLUE	4	SOL1, SOL2, SOL3, SOL4
		#18	3-COND. SHD	3	(112,501,500)/SHD, (114,501,500)/SHD, (115,501,500)/SHD,
			4-COND. SHD	1	(116,117,501,500)/SHD
2A	TESTER J-BOX TO REJECT ASSEMBLY J-BOX	#14	WHT/BLU	1	500
			BLUE	2	SOL1, SOL2
		#18	3-COND. SHD	1	(112,501,500)/SHD
			4-COND. SHD	1	(116,117,501,500)/SHD
3	HSL-LTA/LTS TO RESOLVER	#18	3-TW PAR/SHD	1	(RED/BLK), (GRN,BLK), (WHT,BLK) [CABLE WITH CONNECTOR PROVIDED WITH HSL-LTA/LTS]

CONFIDENTIAL
 This document is the property of Systems Engineering Assoc. Inc. The information contained herein is confidential and not to be reproduced, copied or disclosed to others. Drawing to be returned upon request.

SYSTEMS ENGINEERING ASSOCIATES, INC. ARVADA, COLORADO		
SCALE:	APPROVED:	DRAWN BY: KDV
DATE: 6-14-01		REVISED: 6-18-01
HSL-LTA/LTS INTERCONNECT DIAGRAM		WO#
SYSTEMS ELECTRONICS GROUP		PT#
		DRAWING NUMBER 14-4706-11

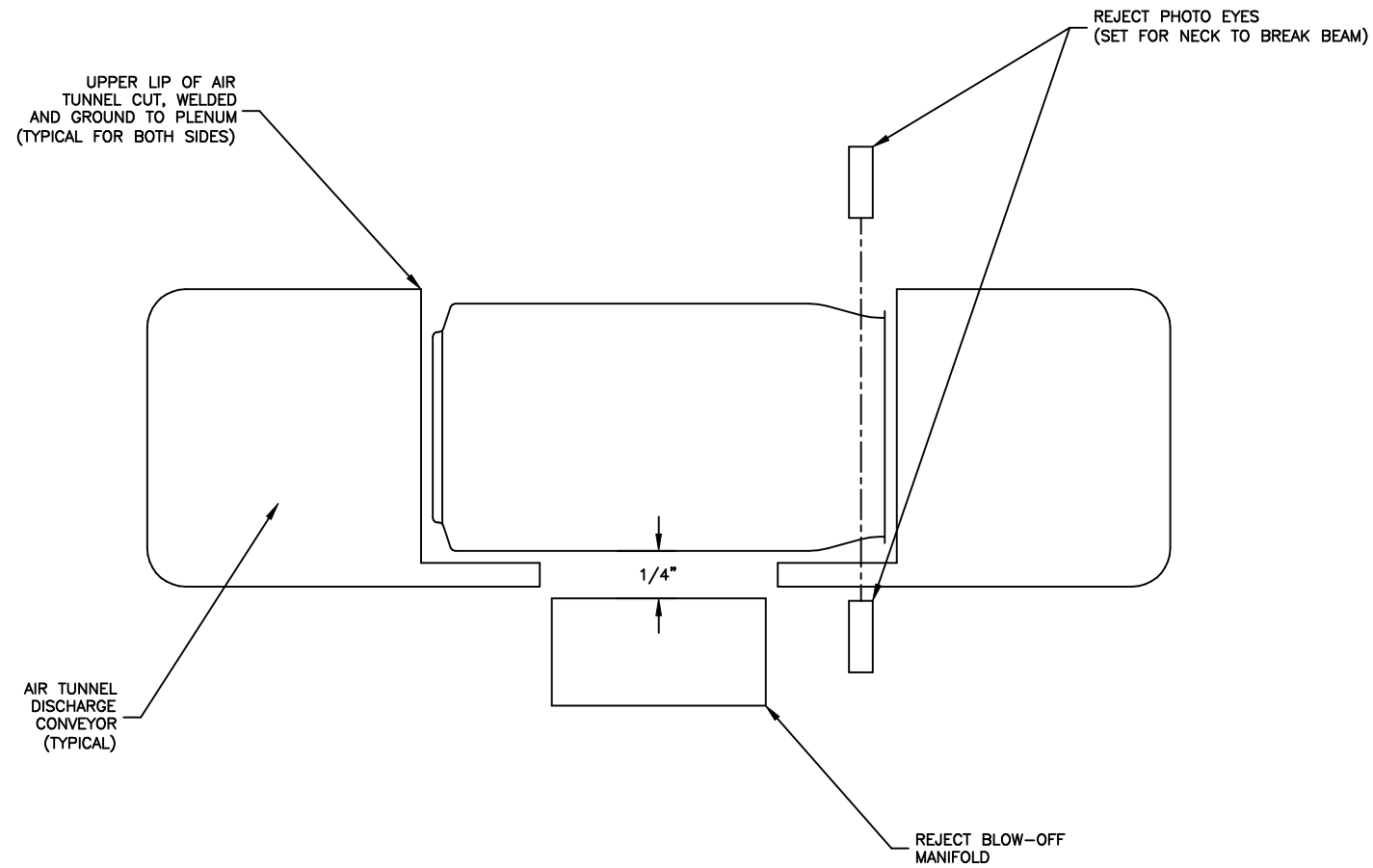
ALUMINUM CAN INSTALLATION
DISCHARGE DETAIL

FIGURE 1



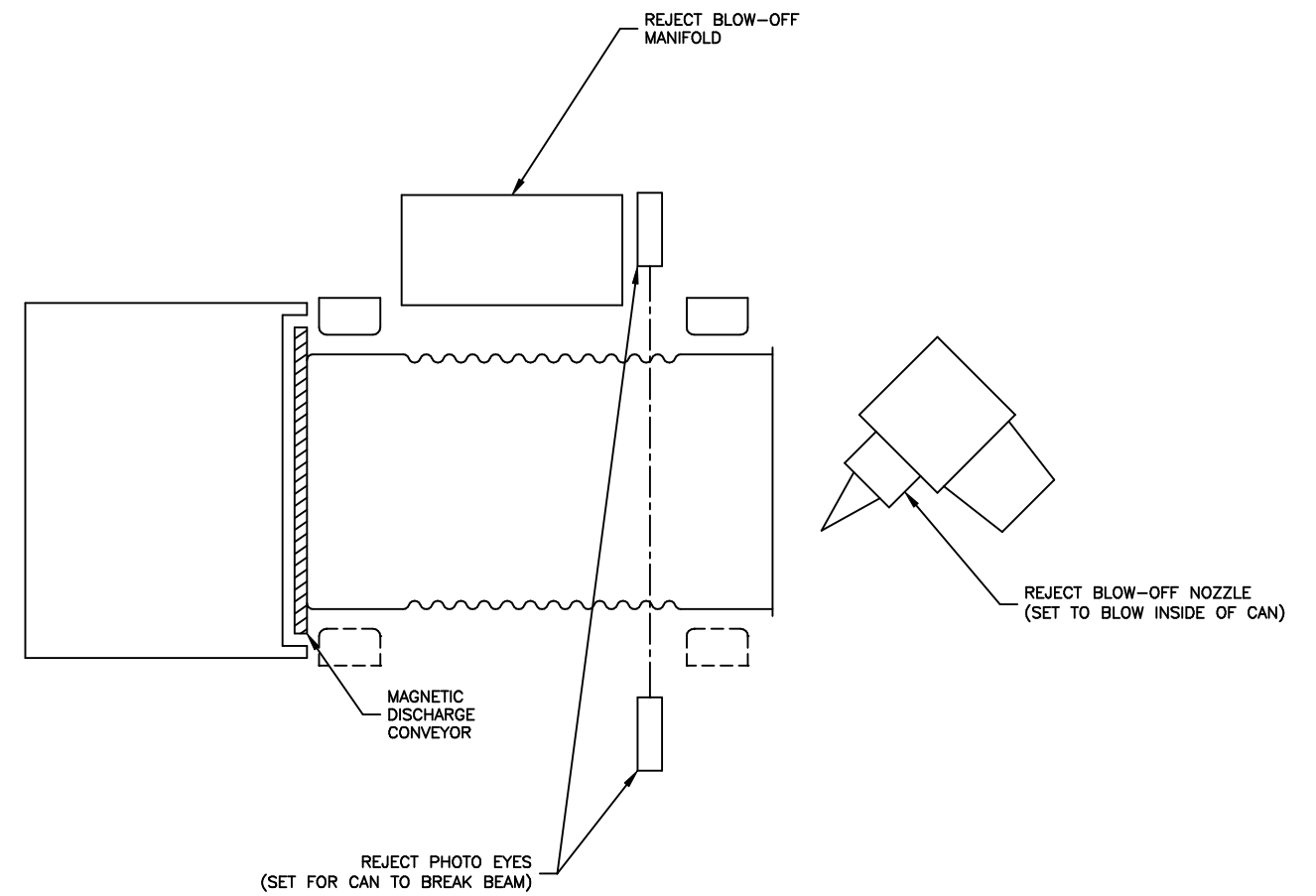
NOTES: (1) PROVIDED BY CUSTOMER

CONFIDENTIAL This document is the property of Systems Engineering Associates, Inc. The information contained herein is confidential and not to be reproduced, copied or distributed without the written consent of Systems Engineering Associates, Inc.	SYSTEMS ENGINEERING ASSOCIATES, INC.		ARVADA, COLORADO
	SCALE: AS NOTED	APPROVED:	DRAWN BY: KDV
	DATE: 6-14-01		REVISED: 11-4-03
	HSL-LTA		WO#
	MECHANICAL DIAGRAM		PT#
SYSTEMS ELECTRONICS GROUP			DRAWING NUMBER 14-4706-17



ALUMINUM CAN INSTALLATION DISCHARGE DETAIL

FIGURE 2



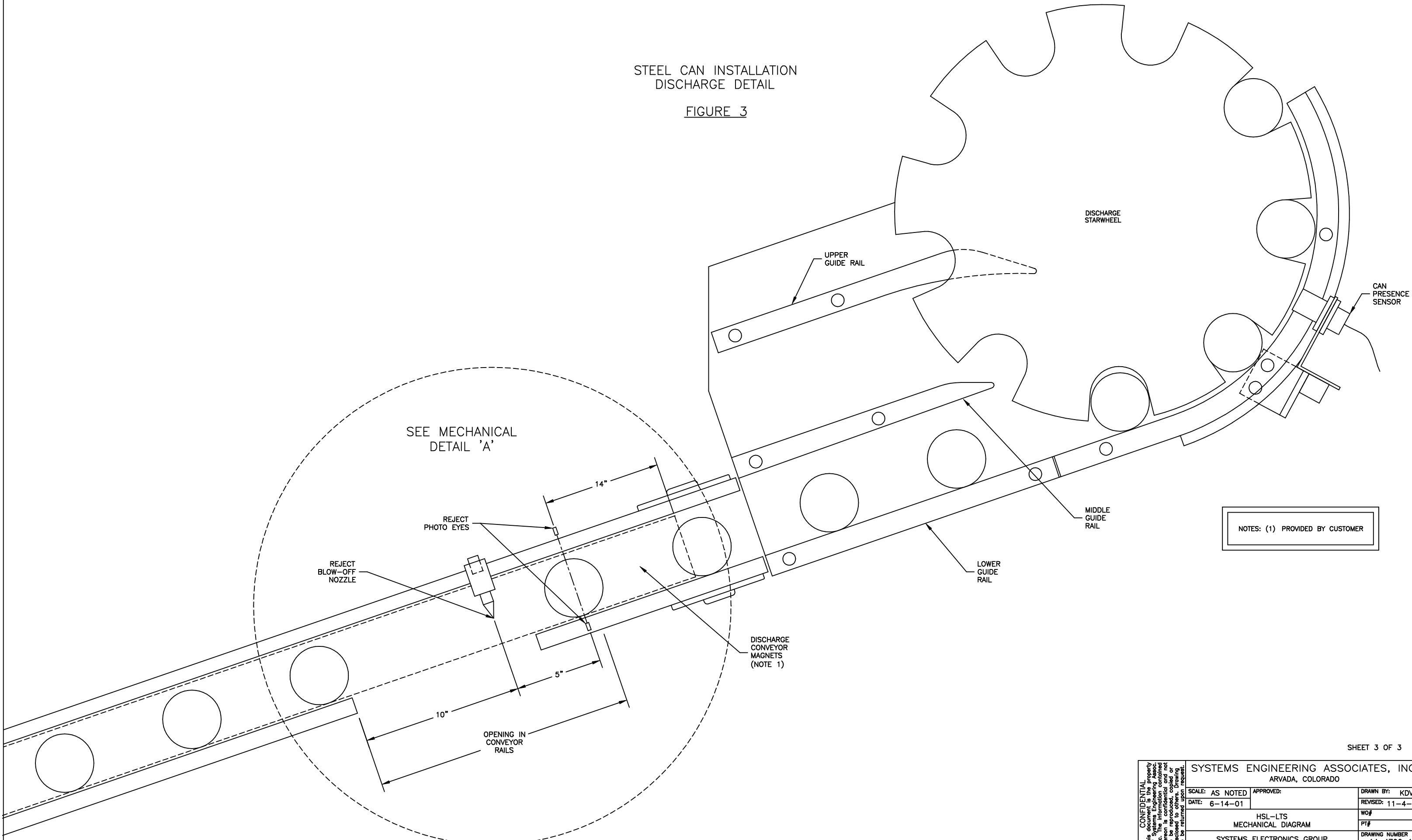
STEEL CAN INSTALLATION DISCHARGE DETAIL

FIGURE 4

CONFIDENTIAL This document is the property of Systems Engineering Associates, Inc. The information contained hereon is confidential and not to be reproduced, copied or distributed without the written consent to be returned upon request.	SYSTEMS ENGINEERING ASSOCIATES, INC. ARVADA, COLORADO		
	SCALE: AS NOTED	APPROVED:	DRAWN BY: KDV
	DATE: 6-14-01	REVISED: 11-4-03	
	HSL-LTA/LTS MECHANICAL DIAGRAM		WO#
	SYSTEMS ELECTRONICS GROUP		DRAWING NUMBER 14-4706-17

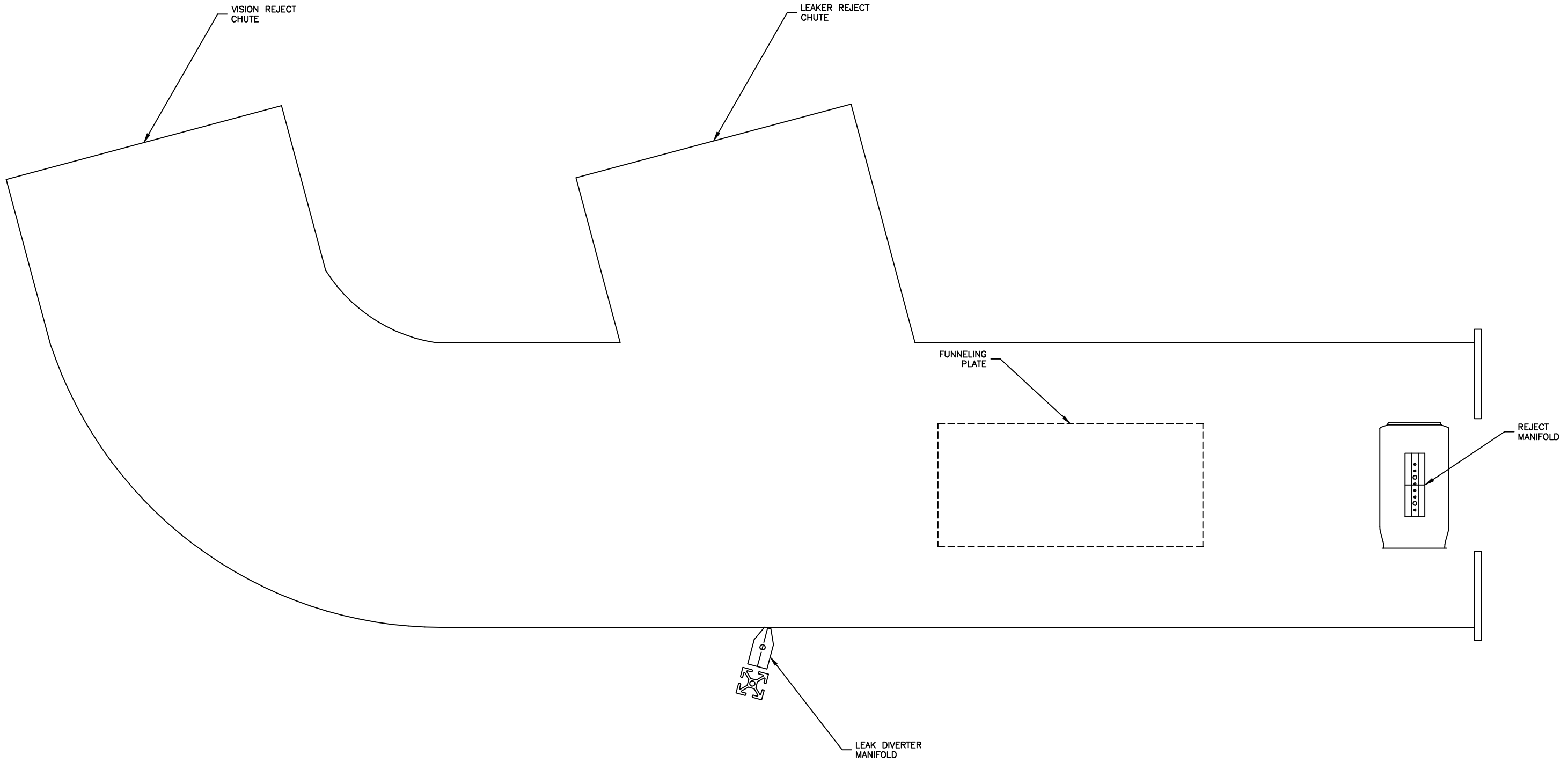
STEEL CAN INSTALLATION
DISCHARGE DETAIL

FIGURE 3



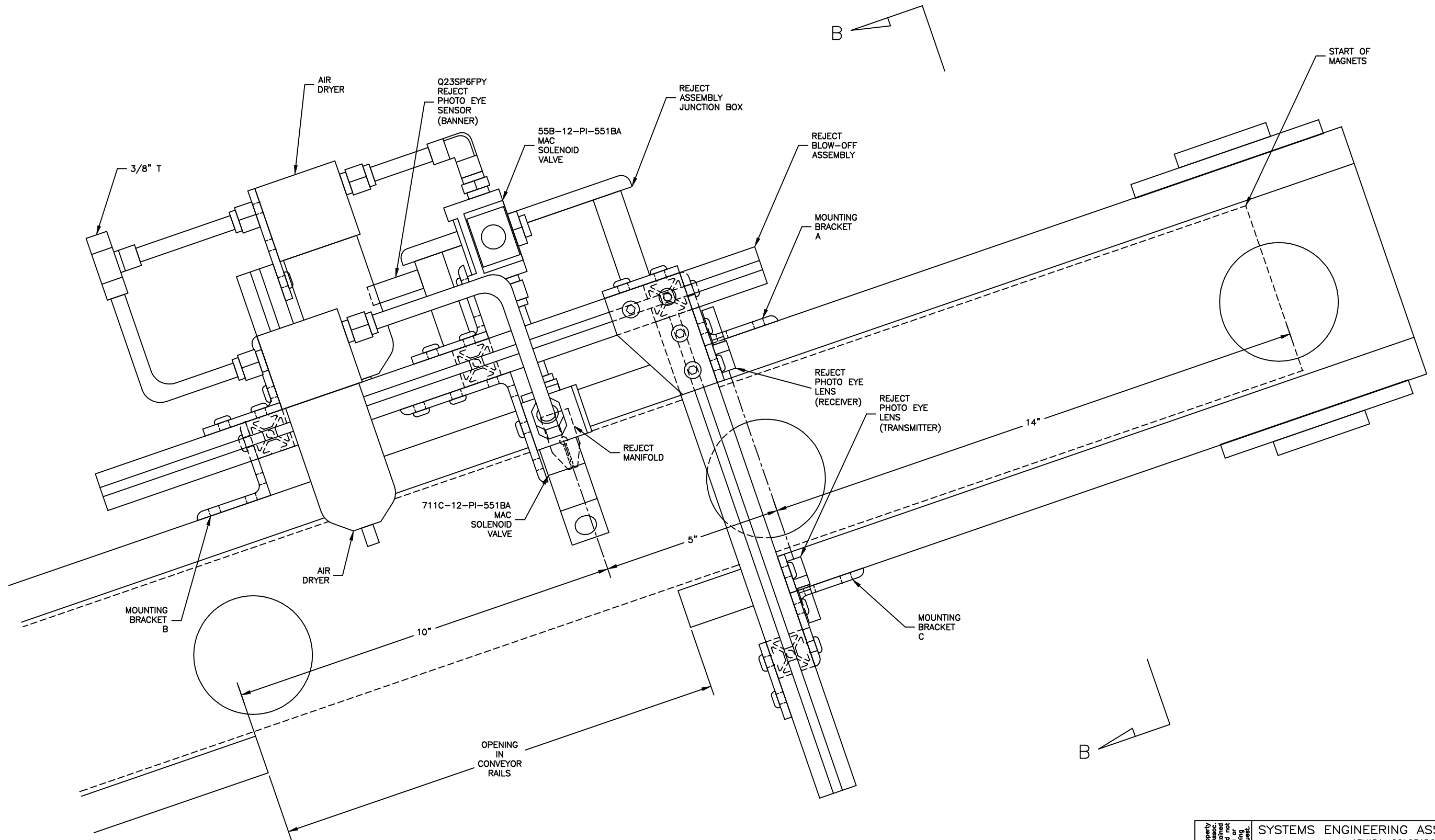
NOTES: (1) PROVIDED BY CUSTOMER

CONFIDENTIAL This document is the property of Systems Engineering Associates, Inc. The information contained hereon is confidential and not to be reproduced, copied or transmitted in any form or by any means without the written consent of Systems Engineering Associates, Inc.	SYSTEMS ENGINEERING ASSOCIATES, INC.		DATE: 6-14-01	DRAWN BY: KDV
	ARVADA, COLORADO		APPROVED:	REVISED: 11-4-03
	SCALE: AS NOTED		HSL-LTS	
	DATE: 6-14-01		MECHANICAL DIAGRAM	
SYSTEMS ELECTRONICS GROUP			DRAWING NUMBER 14-4706-17	



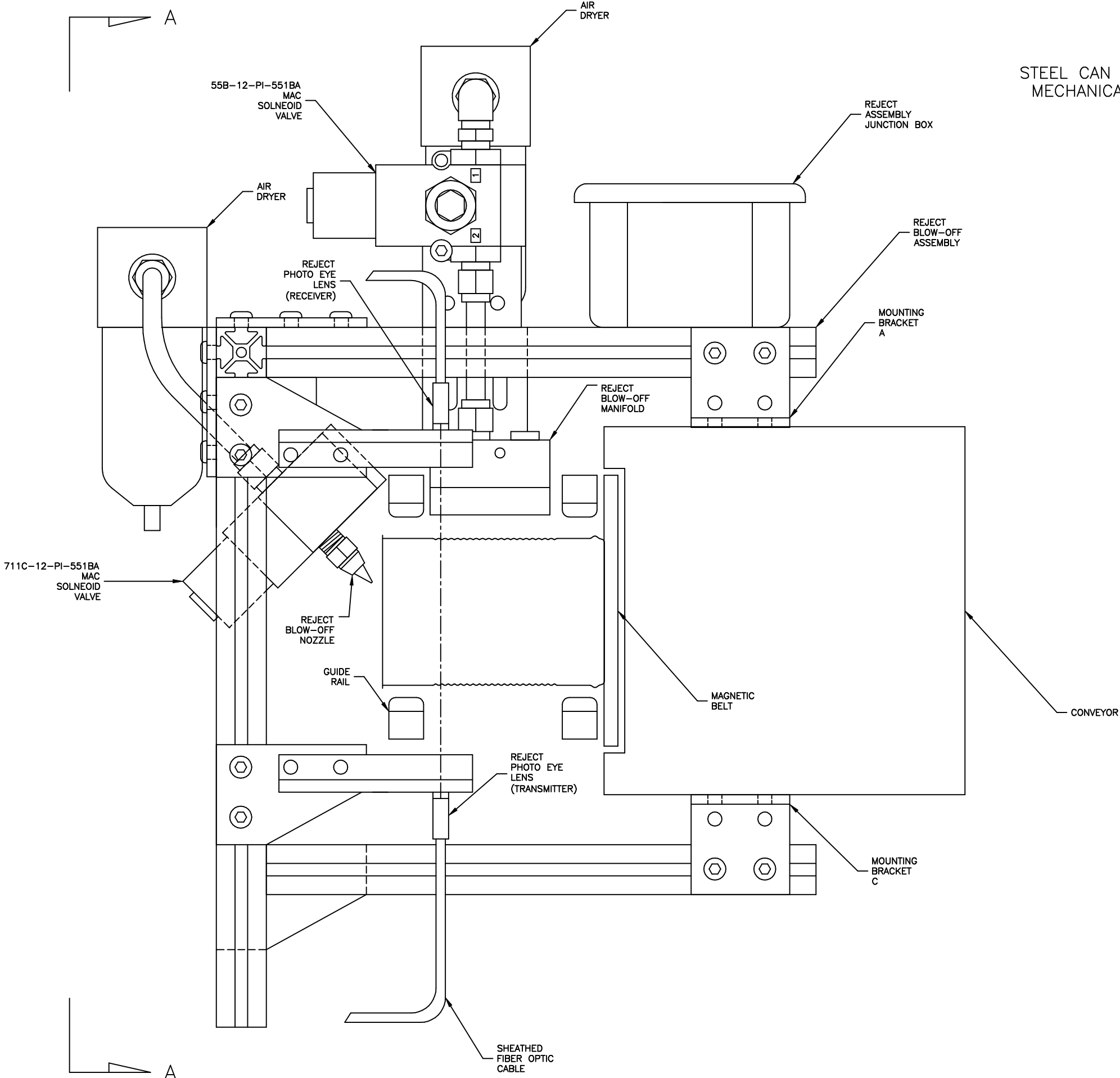
CONFIDENTIAL This document is the property of Systems Engineering Associates, Inc. The information contained herein is confidential and not to be reproduced, copied or disseminated in any form without the written consent of Systems Engineering Associates, Inc. to be returned upon request.	SYSTEMS ENGINEERING ASSOCIATES, INC. ARVADA, COLORADO		
	SCALE: AS NOTED	APPROVED:	DRAWN BY: KDV
	DATE: 11-2-06		REVISED: 11-2-06
	HSL-LTA MECHANICAL DIAGRAM		WO#
	SYSTEMS ELECTRONICS GROUP		DRAWING NUMBER 14-4706-17

STEEL CAN INSTALLATION
MECHANICAL DETAIL A



CONFIDENTIAL This document is the property of Systems Engineering Associates, Inc. The information contained hereon is confidential and not to be reproduced, copied or transmitted in any form without the written consent of Systems Engineering Associates, Inc. to be returned upon request.	SYSTEMS ENGINEERING ASSOCIATES, INC.		DRAWN BY: KDV
	ARVADA, COLORADO		REVISED: 11-4-03
	SCALE: AS NOTED	APPROVED:	WO#
	DATE: 11-3-03	HSL-LTS	PT#
	MECHANICAL DETAIL		DRAWING NUMBER
SYSTEMS ELECTRONICS GROUP		14-4706-18	

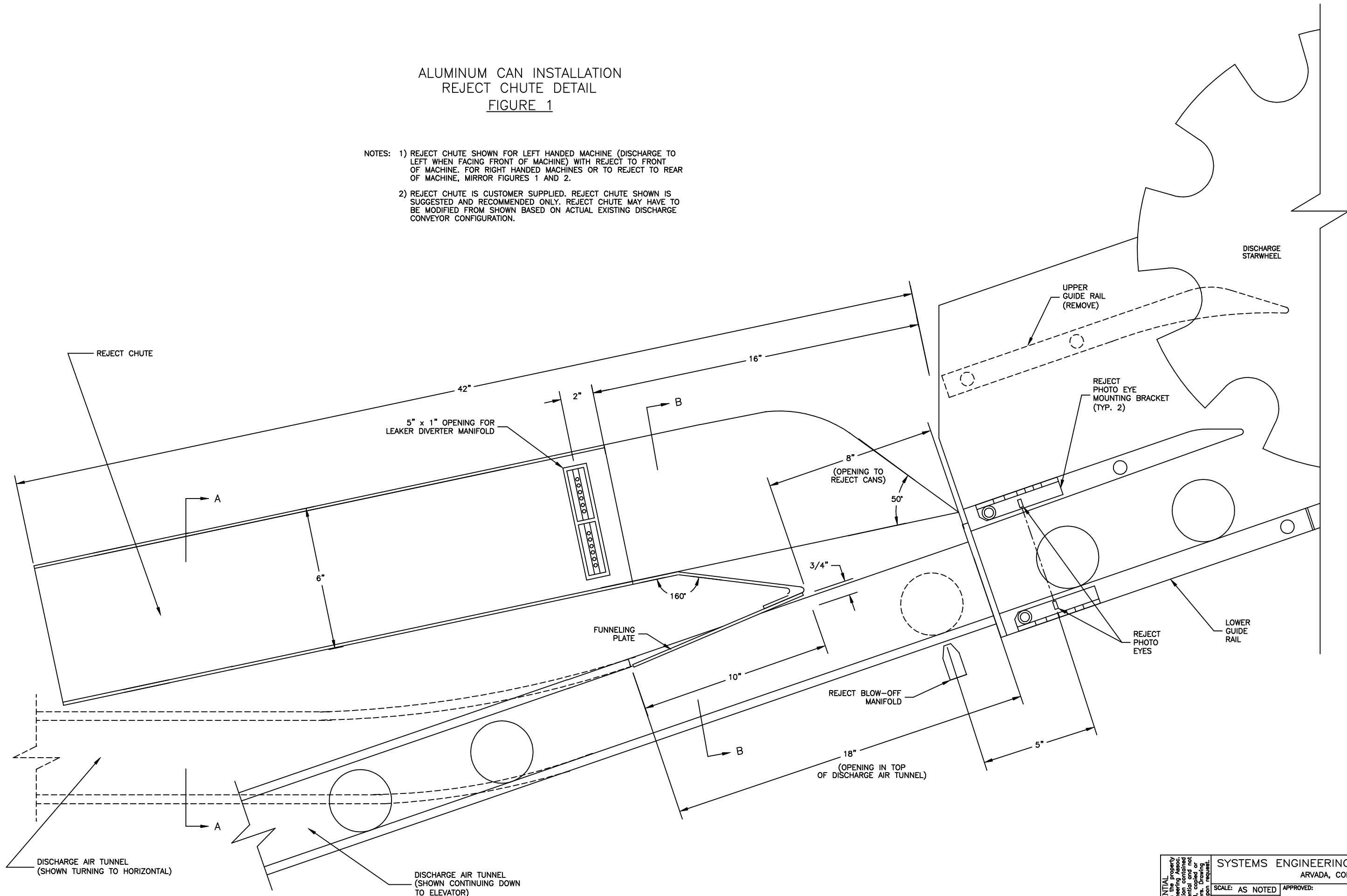
STEEL CAN INSTALLATION
MECHANICAL DETAIL B



CONFIDENTIAL This document is the property of Systems Engineering Associates, Inc. The information contained herein is confidential and not to be reproduced, copied or distributed without the written consent of Systems Engineering Associates, Inc. to be returned upon request.	SYSTEMS ENGINEERING ASSOCIATES, INC. ARVADA, COLORADO		
	SCALE: AS NOTED	APPROVED:	DRAWN BY: KDV
	DATE: 11-3-03	REVISED: 11-4-03	
	HSL-LTS MECHANICAL DETAIL		WO#
	SYSTEMS ELECTRONICS GROUP		DRAWING NUMBER 14-4706-18

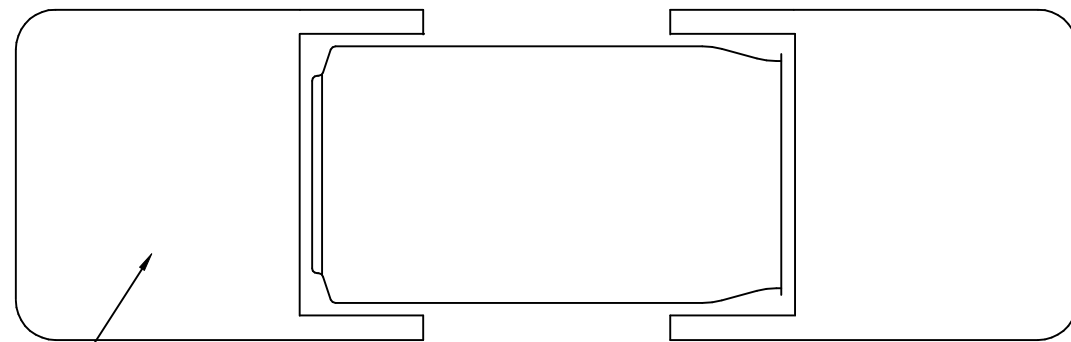
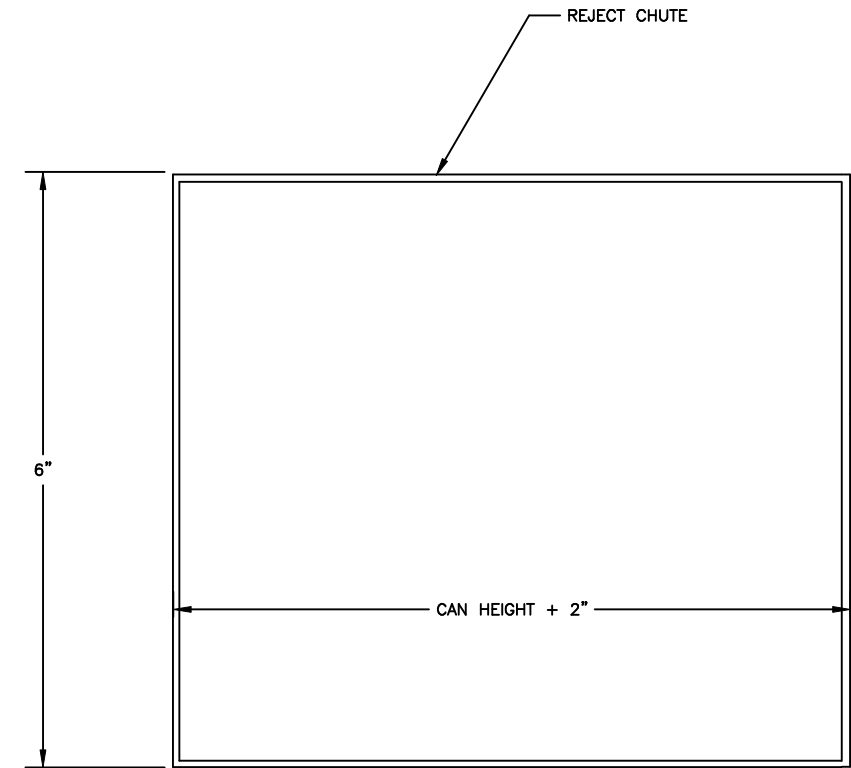
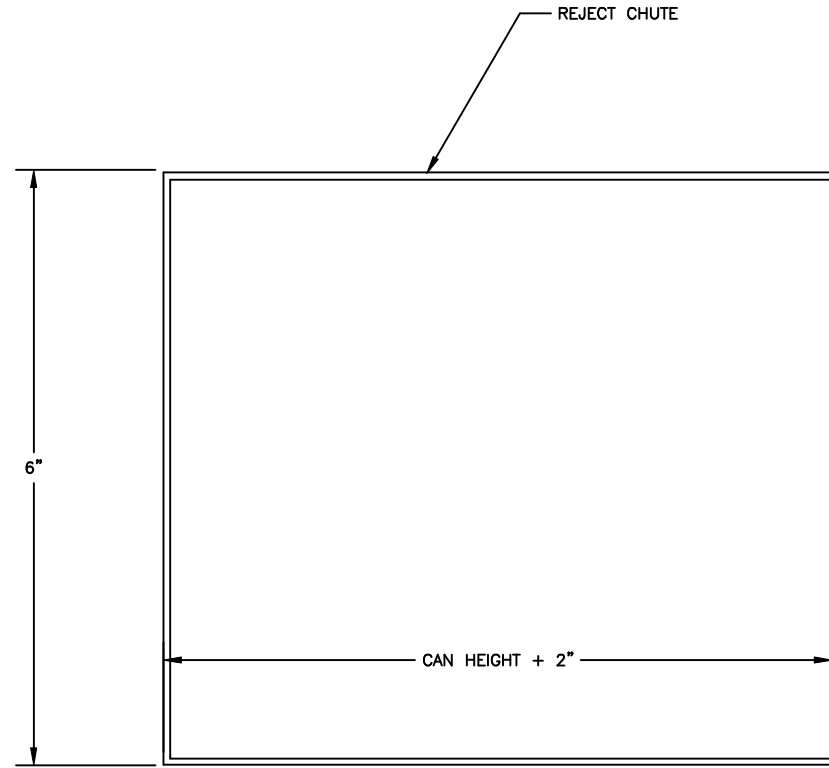
ALUMINUM CAN INSTALLATION
 REJECT CHUTE DETAIL
 FIGURE 1

- NOTES: 1) REJECT CHUTE SHOWN FOR LEFT HANDED MACHINE (DISCHARGE TO LEFT WHEN FACING FRONT OF MACHINE) WITH REJECT TO FRONT OF MACHINE. FOR RIGHT HANDED MACHINES OR TO REJECT TO REAR OF MACHINE, MIRROR FIGURES 1 AND 2.
- 2) REJECT CHUTE IS CUSTOMER SUPPLIED. REJECT CHUTE SHOWN IS SUGGESTED AND RECOMMENDED ONLY. REJECT CHUTE MAY HAVE TO BE MODIFIED FROM SHOWN BASED ON ACTUAL EXISTING DISCHARGE CONVEYOR CONFIGURATION.



CONFIDENTIAL This document is the property of Systems Engineering Associates, Inc. The information contained herein is confidential and not to be reproduced, copied or distributed without the written consent of Systems Engineering Associates, Inc.	SYSTEMS ENGINEERING ASSOCIATES, INC. ARVADA, COLORADO		DRAWN BY: MDD
	SCALE: AS NOTED	APPROVED:	REVISED:
	DATE: 11-7-06	HSL-LTA REJECT CHUTE DETAIL	
	SYSTEMS ELECTRONICS GROUP		DRAWING NUMBER 14-4706-19

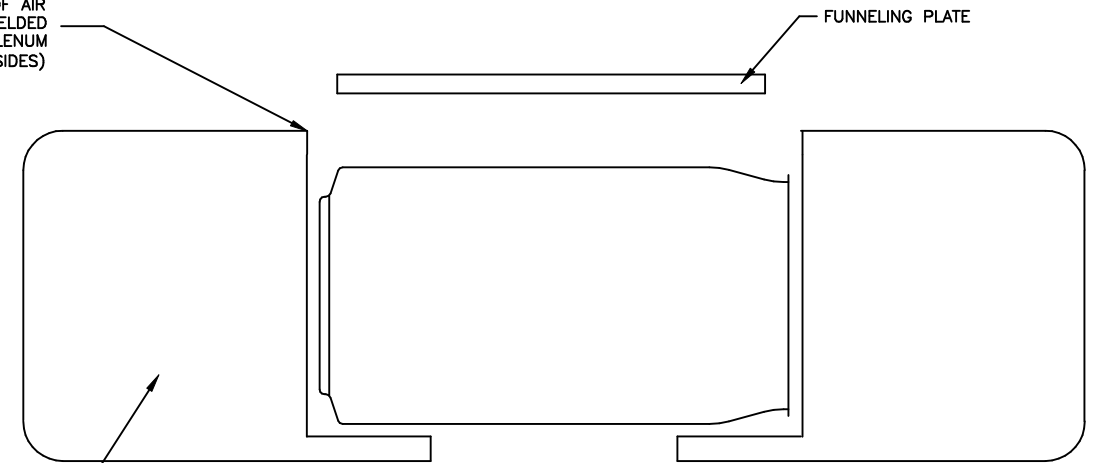
ALUMINUM CAN INSTALLATION
REJECT CHUTE DETAIL



SECTION A-A

AIR TUNNEL
DISCHARGE
CONVEYOR
(TYPICAL)

UPPER LIP OF AIR
TUNNEL CUT, WELDED
AND GROUND TO PLENUM
(TYPICAL FOR BOTH SIDES)



SECTION B-B

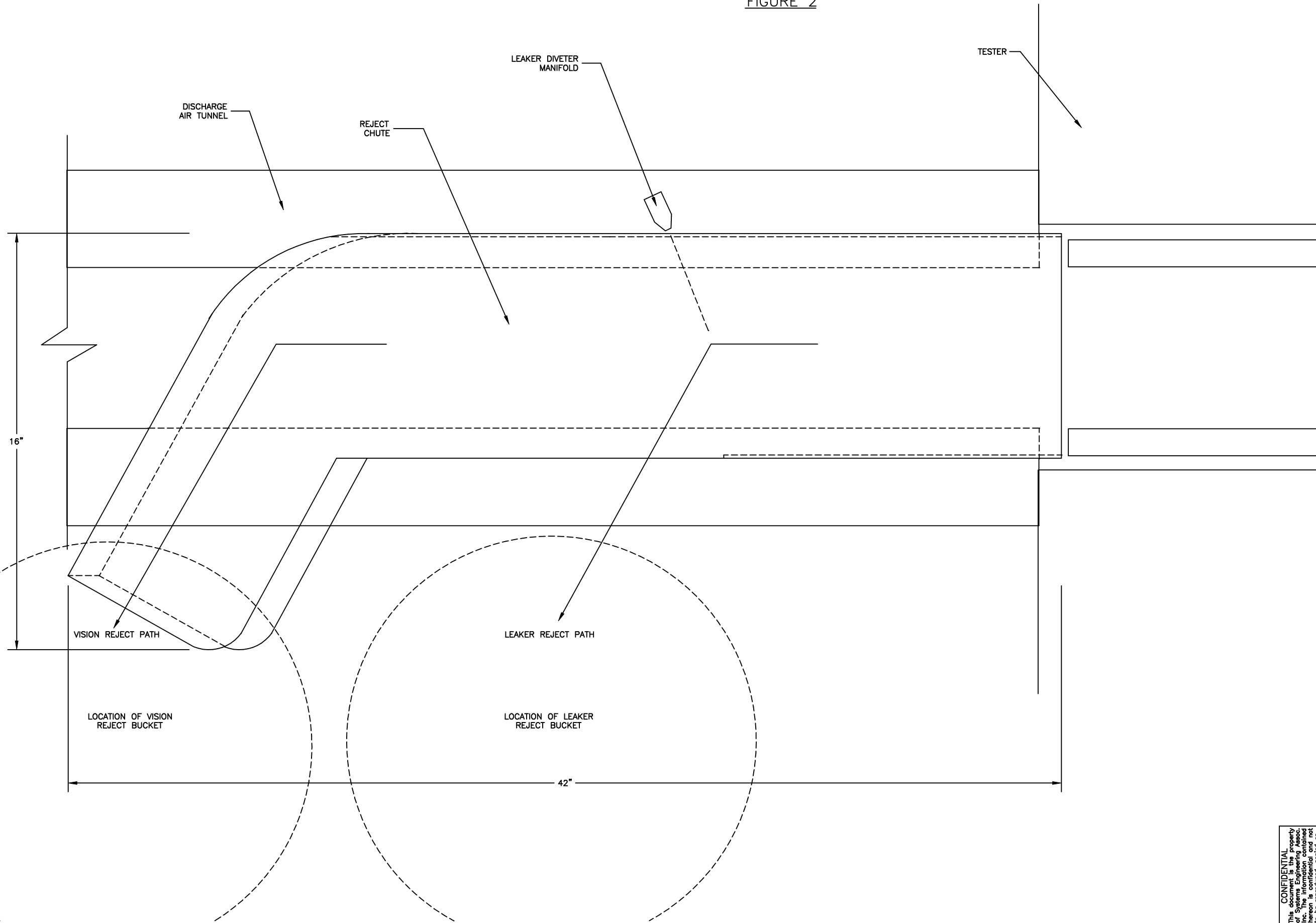
AIR TUNNEL
DISCHARGE
CONVEYOR
(TYPICAL)

FUNNELING PLATE

CONFIDENTIAL This document is the property of Systems Engineering Associates, Inc. The information contained herein is confidential and not to be reproduced, copied or distributed without the written consent of Systems Engineering Associates, Inc.	SYSTEMS ENGINEERING ASSOCIATES, INC.		DRAWN BY: MDD
	ARVADA, COLORADO		REVISED:
	SCALE: AS NOTED	APPROVED:	WO#
	DATE: 11-7-06		PT#
	HSL-LTA REJECT CHUTE DETAIL		DRAWING NUMBER 14-4706-19
SYSTEMS ELECTRONICS GROUP			

ALUMINUM CAN INSTALLATION
REJECT CHUTE DETAIL
PLAN VIEW

FIGURE 2



CONFIDENTIAL This document is the property of Systems Engineering Associates, Inc. The information contained herein is confidential and not to be reproduced, copied or distributed without the written consent of Systems Engineering Associates, Inc. to be returned upon request.	SYSTEMS ENGINEERING ASSOCIATES, INC. ARVADA, COLORADO		
	SCALE: AS NOTED	APPROVED:	DRAWN BY: MDD
	DATE: 11-7-06		REVISED:
	HSL-LTA REJECT CHUTE DETAIL		WO#
	SYSTEMS ELECTRONICS GROUP		PT#
		DRAWING NUMBER	
		14-4706-19	