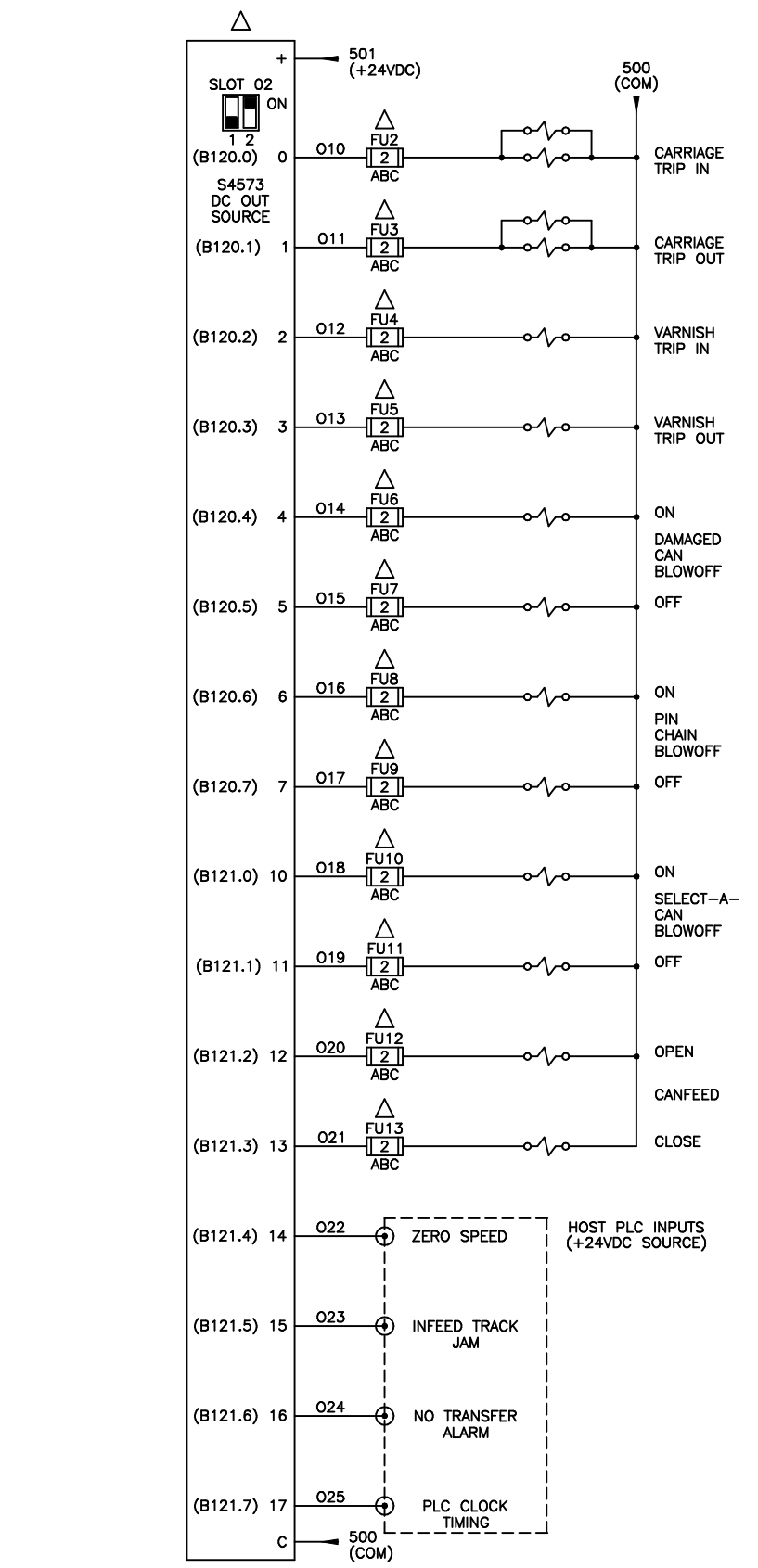
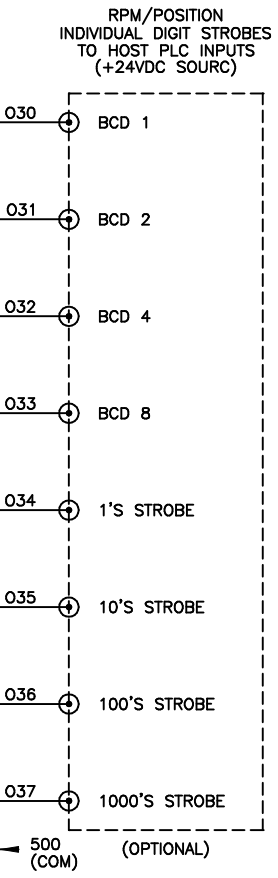
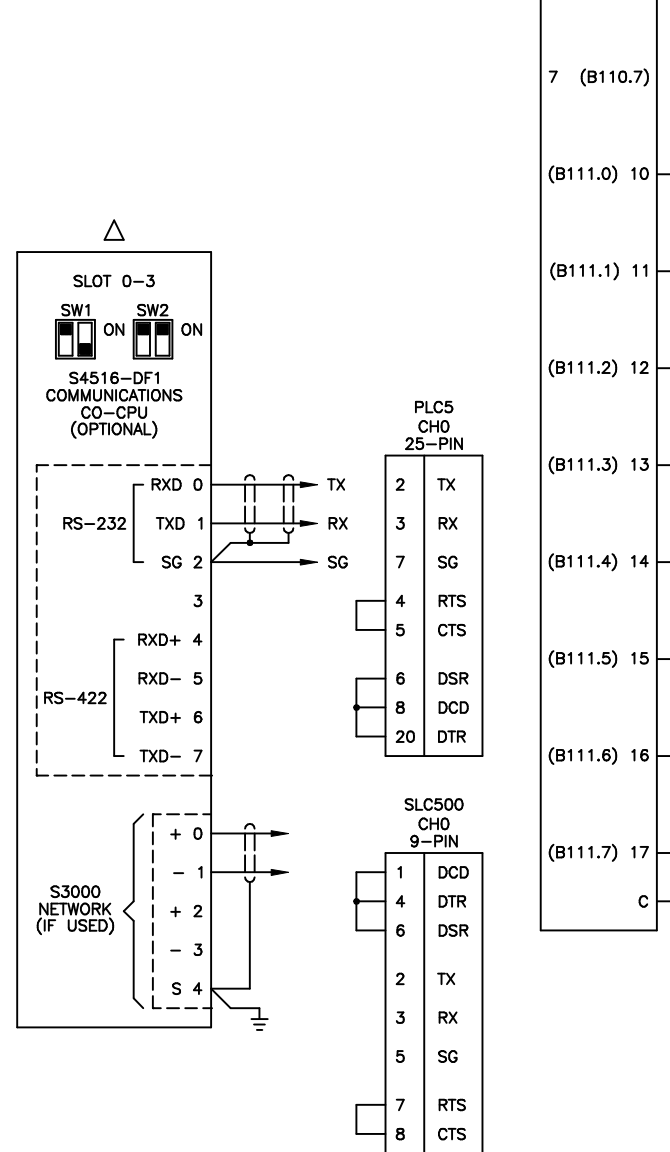
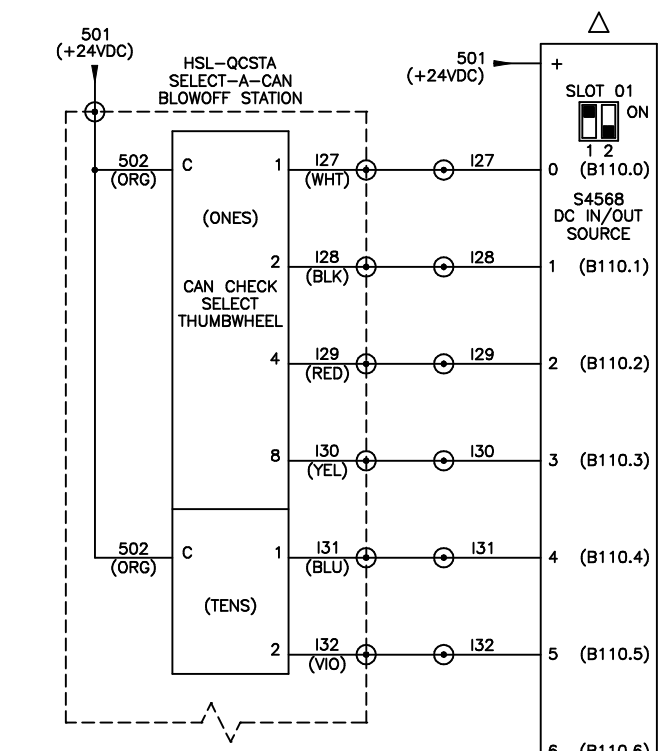
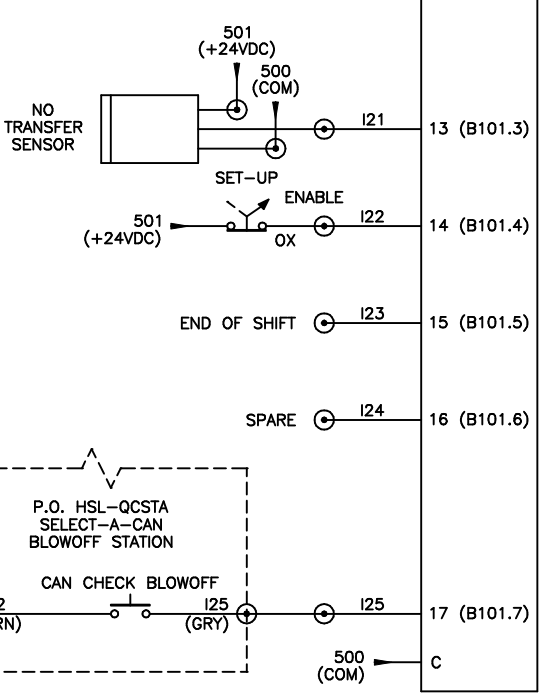
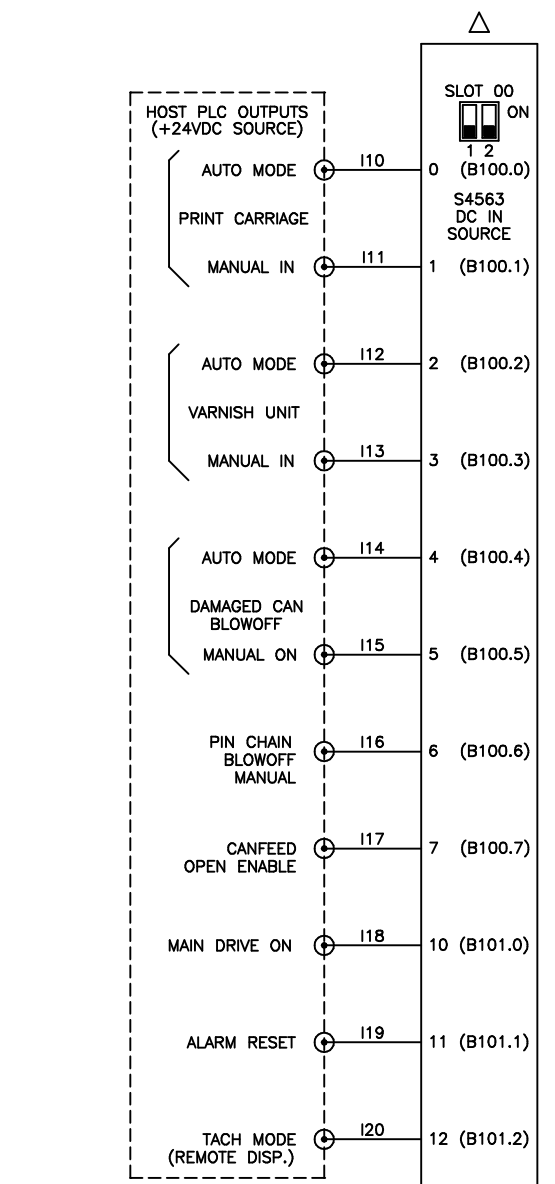


NOTE 1:  
 (1) FOR SEG RSV34-MS1 RESOLVER, JUMPER R0 TO R1 ON RESOLVER INPUT.  
 (2) FOR AUTOTECH RESOLVERS, INSTALL 470ohm, 1/2W RESISTOR BETWEEN R0 AND R1 ON RESOLVER INPUT.



CONFIDENTIAL  
 This document is the property of Systems Engineering Associates, Inc. The information contained herein is confidential and is not to be reproduced, copied or disclosed to others. Drawing to be returned upon request.

SYSTEMS ENGINEERING ASSOCIATES, INC.  
 ARVADA, COLORADO

SCALE: 9-10-97  
 DATE: 9-10-97  
 APPROVED:  
 RUTHERFORD DECORATOR/BASECOATER ELECTRICAL CONTROL SCHEMATIC  
 SYSTEMS ELECTRONICS GROUP

DRAWN BY: KDV  
 REVISED: 9-27-16  
 WO#  
 PT# HSL-CD4  
 DRAWING NUMBER 14-4514-10

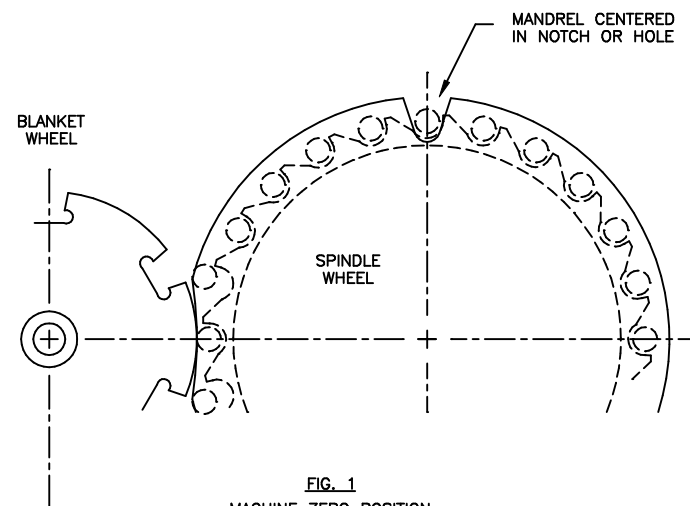


FIG. 1  
MACHINE ZERO POSITION  
(AS SEEN FROM BACK OF MACHINE)

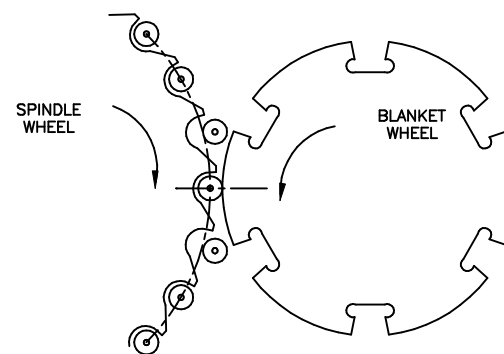


FIG. 3  
LOCATION AT WHICH PRINT CARRIAGE TRIP TIMING  
(CHANNEL 00) SHOULD JUST TURN ON

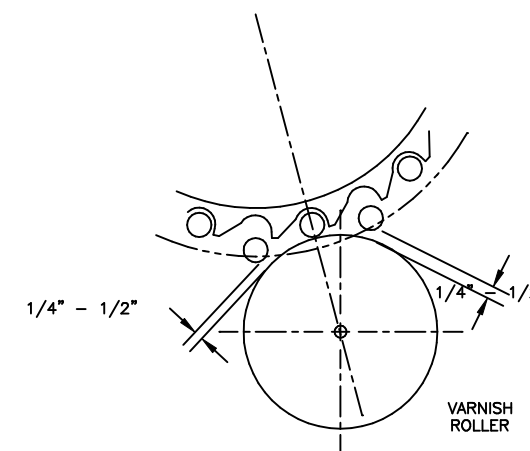


FIG. 4  
LOCATION AT WHICH PRINT VARNISH TRIP TIMING  
(CHANNEL 01) SHOULD JUST TURN ON

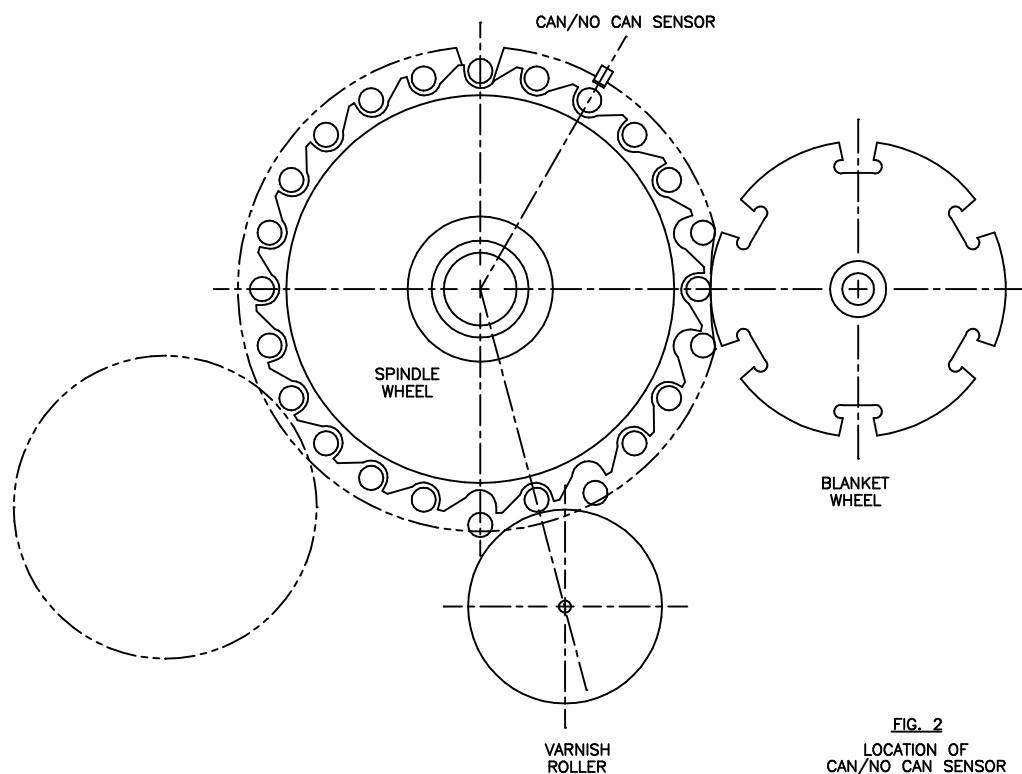


FIG. 2  
LOCATION OF  
CAN/NO CAN SENSOR

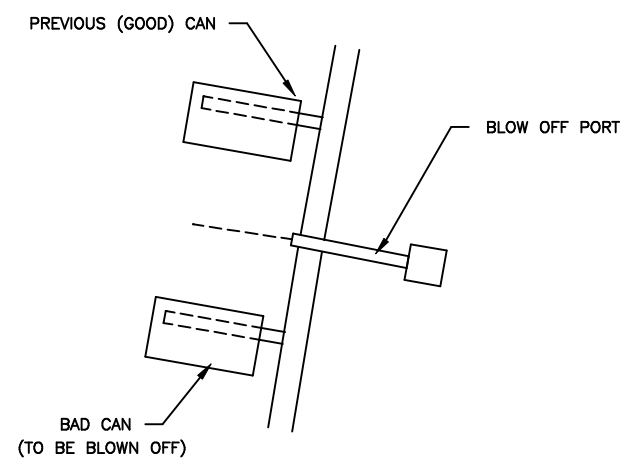
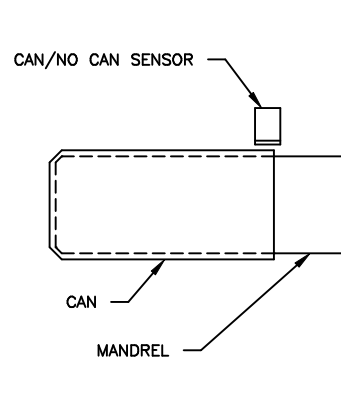
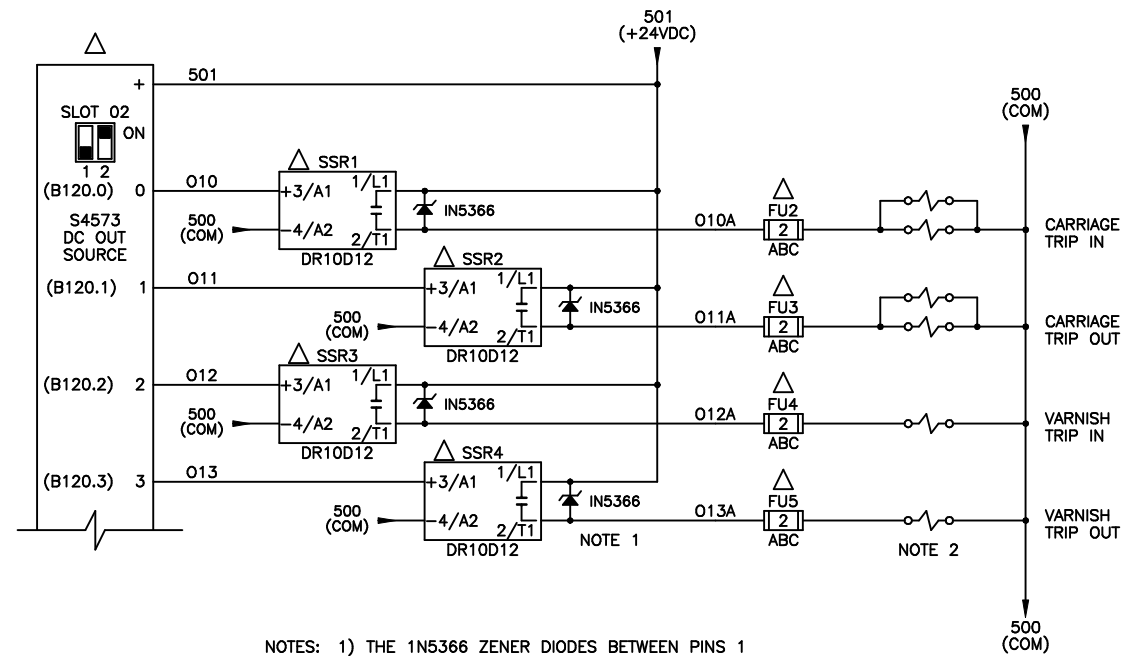


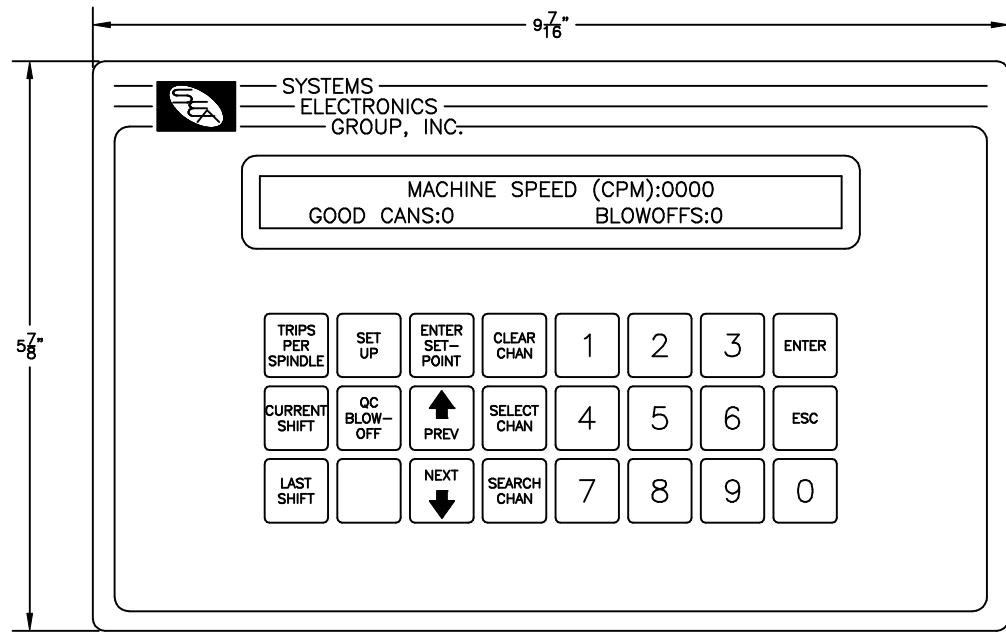
FIG. 5  
LOCATION AT WHICH BLOW OFF TIMING  
(CHANNEL 05 OR 06) SHOULD JUST TURN ON

CONFIDENTIAL This document is the property of Systems Engineering Assoc., Inc. The information contained herein is confidential and is not to be reproduced, copied or disclosed to others. Drawing to be returned upon request.	SYSTEMS ENGINEERING ASSOCIATES, INC. ARVADA, COLORADO		
	SCALE:	APPROVED:	DRAWN BY: KDV
	DATE: 9-10-97		REVISED: 9-27-16
	RUTHERFORD DECORATOR/BASECOATER TIMING PROCEDURE		WO#
SYSTEMS ELECTRONICS GROUP			PT# HSL-CD4 DRAWING NUMBER 14-4514-10

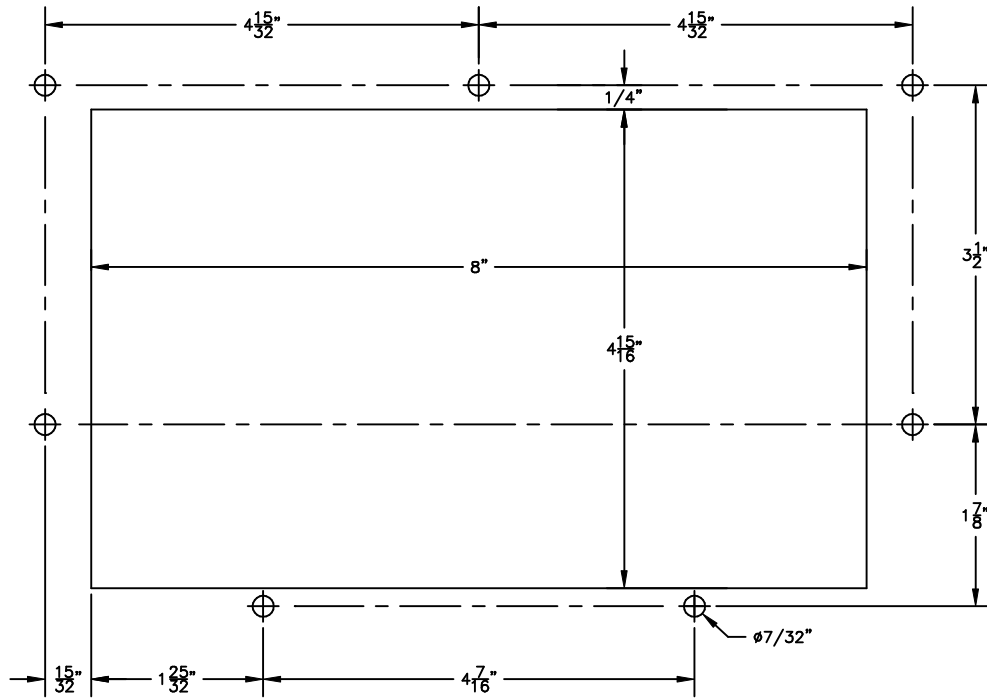


- NOTES: 1) THE 1N5366 ZENER DIODES BETWEEN PINS 1 AND 2 OF THE SSR SOLID STATE RELAYS MUST BE INSTALLED AS SHOWN. THESE PROTECT THE SOLID STATE RELAYS FROM THE BACK EMF OF THE SOLENOIDS WHEN THE SOLENOIDS ARE TURNED OFF AS WELL AS PROVIDE THE REQUIRED FAST TURN OFF RESPONSE REQUIRED FOR THE CARRIAGE AND VARNISH UNIT.
- 2) DO NOT INSTALL FLYBACK DIODES DIRECTLY ACROSS THE CARRIAGE AND VARNISH UNIT SOLENOIDS. DOING SO WILL DRAMATICALLY INCREASE THE TURN OFF TIME OF THE SOLENOIDS. THE 1N5366 ZENERS PERFORM THE SAME FUNCTION AS FLYBACK DIODES WHILE ALLOWING A MUCH FASTER TURN OFF TIME.

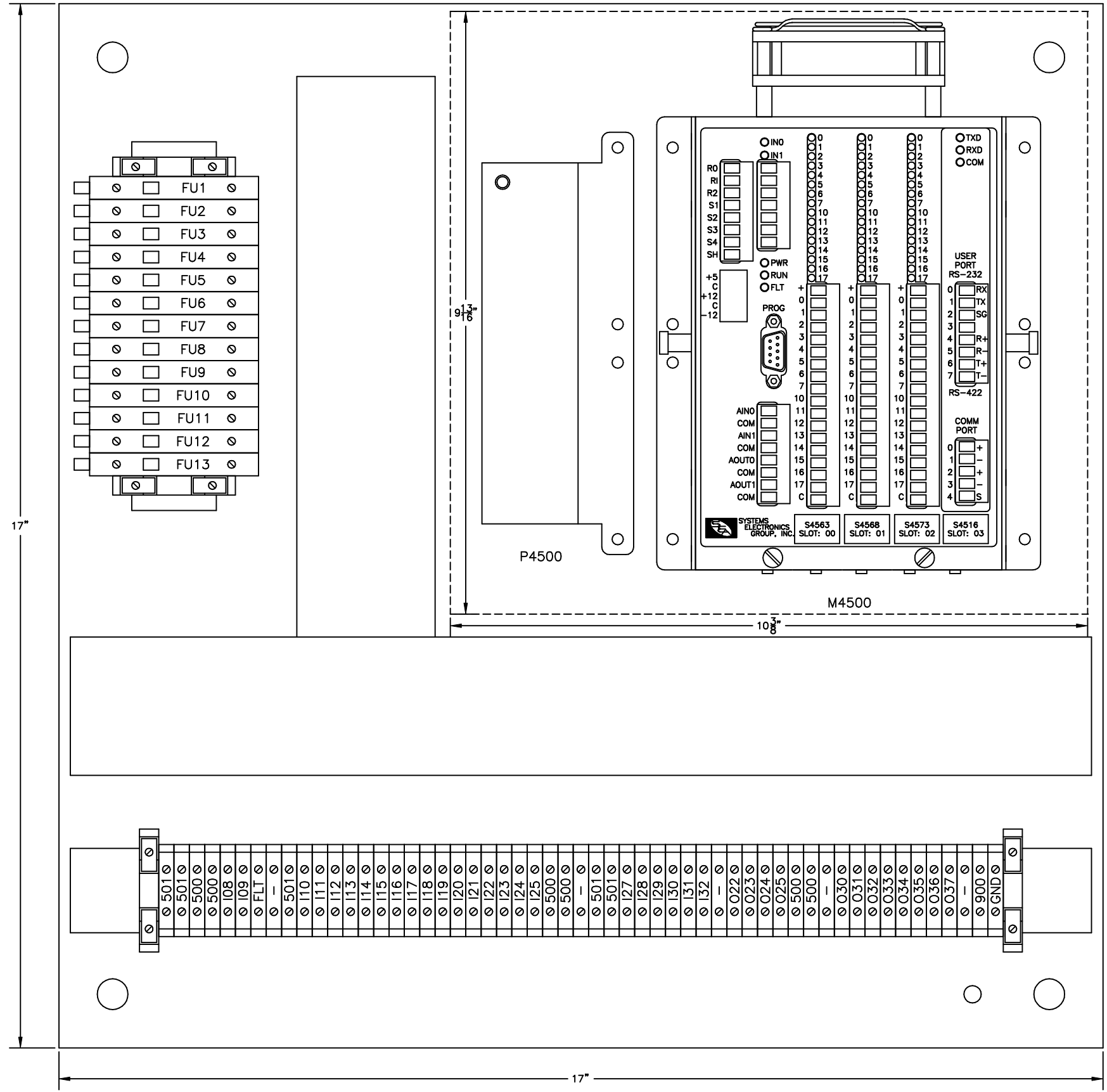
CONFIDENTIAL This document is the property of Systems Engineering Assoc. Inc. The information contained herein is confidential and not to be reproduced, copied or disclosed to others. Drawing to be returned upon request.	SYSTEMS ENGINEERING ASSOCIATES, INC. ARVADA, COLORADO		
	SCALE:	APPROVED:	DRAWN BY: MDD
	DATE: 8-16-19		REVISED:
	RUTHERFORD DECORATOR/BASECOATER HIGH CURRENT OUTPUT OPTION		WO#
	SYSTEMS ELECTRONICS GROUP		PT#
			DRAWING NUMBER 14-4514-10



HSL-CD4 KEYPAD DISPLAY



RECOMMENDED PANEL CUT-OUT

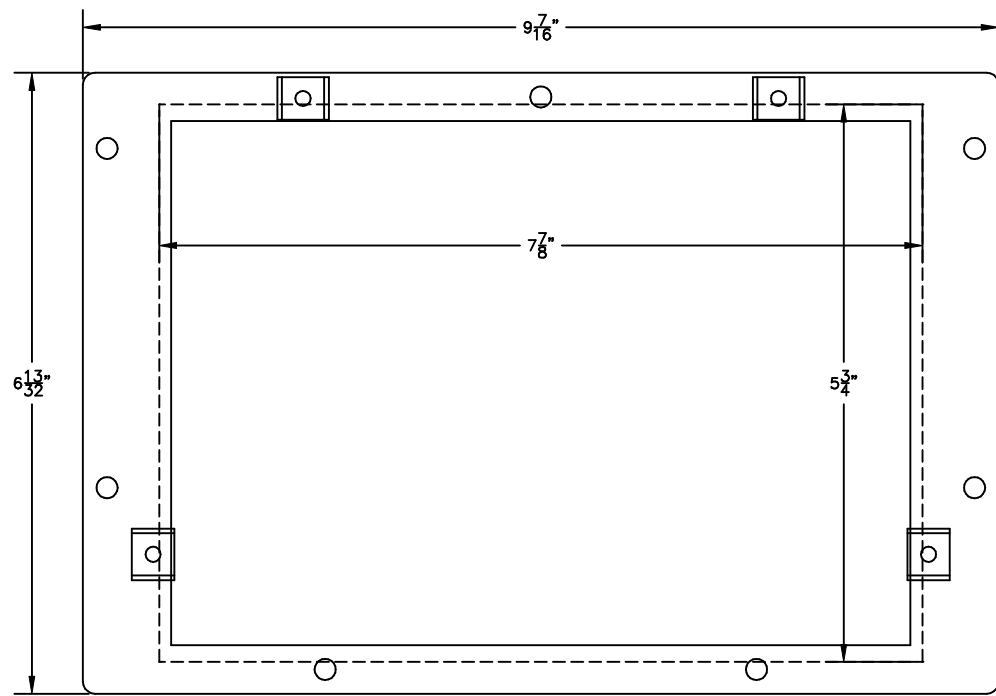


HSL-CD4 PREWIRED BACK PANEL

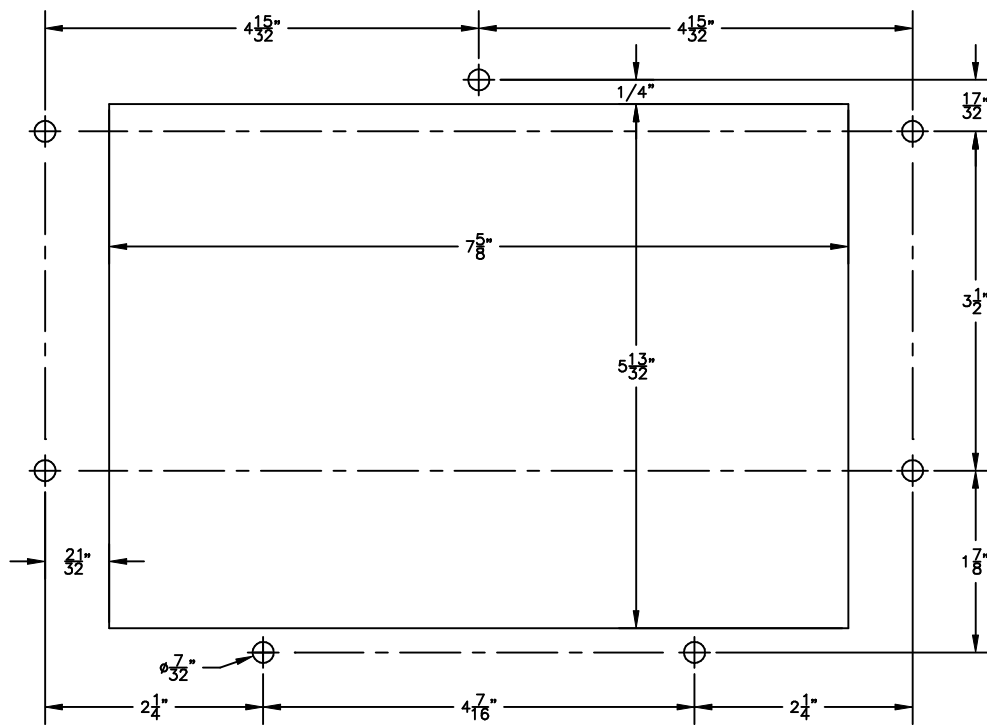
CONFIDENTIAL  
This document is the property of Systems Engineering Assoc. Inc. The information contained herein is confidential and is to be reproduced, copied or disclosed to others. Drawing to be returned upon request.

SYSTEMS ENGINEERING ASSOCIATES, INC.  
ARVADA, COLORADO

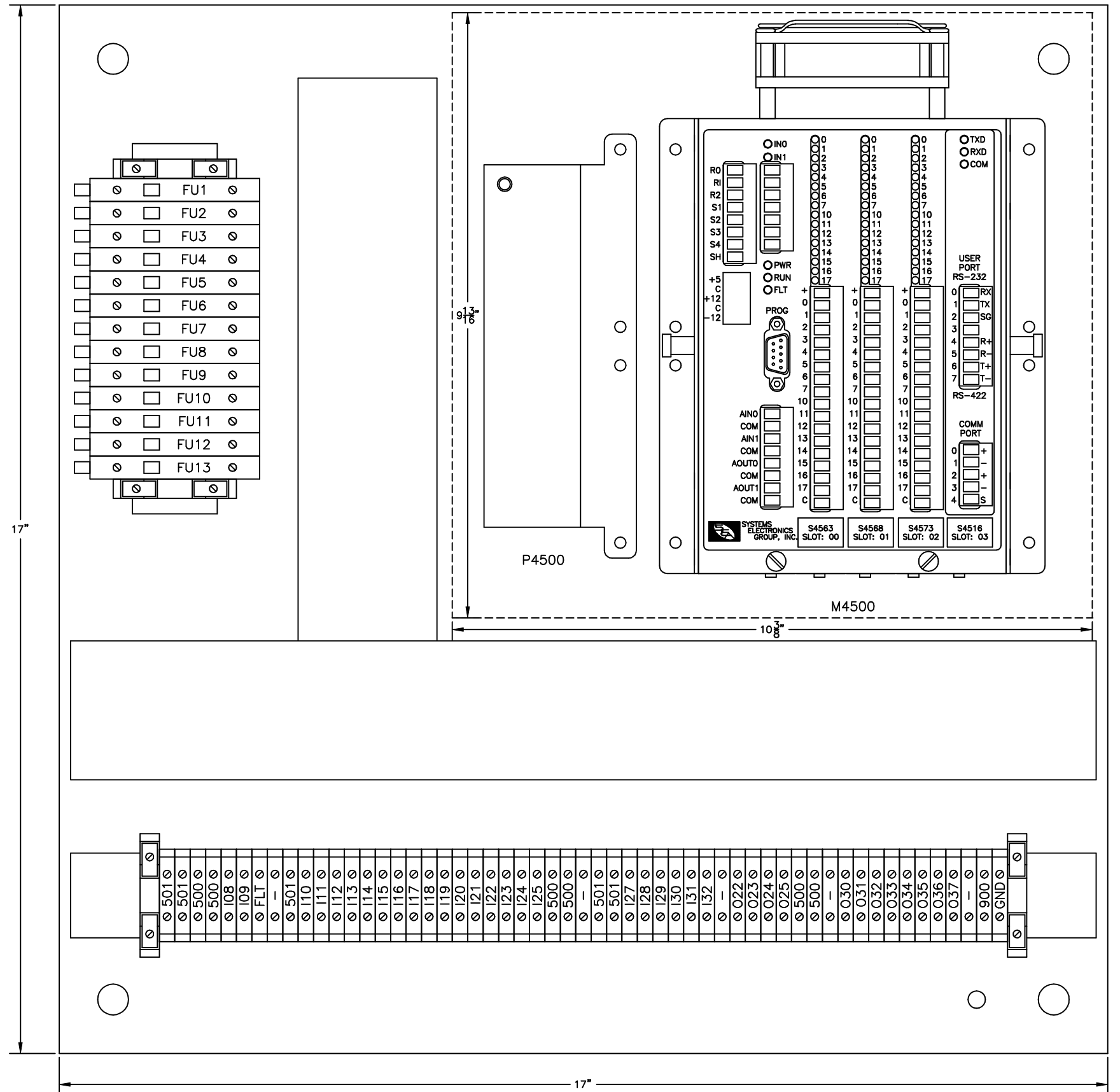
SCALE: AS NOTED	APPROVED:	DRAWN BY: KDV
DATE: 2-14-02		REVISED: 9-27-16
RUTHERFORD DECORATOR/BASECOATER MECHANICAL LAYOUT		WO#
SYSTEMS ELECTRONICS GROUP		PT# HSL-CD4
		DRAWING NUMBER 14-4514-15



HSL-CD4 HMI5070DL DISPLAY



RECOMMENDED PANEL CUT-OUT



HSL-CD4 PREWIRED BACK PANEL

CONFIDENTIAL This document is the property of Systems Engineering Assoc., Inc. The information contained herein is confidential and is not to be reproduced, copied or disclosed to others. Drawing to be returned upon request.	<b>SYSTEMS ENGINEERING ASSOCIATES, INC.</b> ARVADA, COLORADO		DRAWN BY: KDV
	SCALE: AS NOTED	APPROVED:	REVISED: 9-08-17
	DATE: 2-14-02	RUTHERFORD DECORATOR/BASECOATER MECHANICAL LAYOUT	
	SYSTEMS ELECTRONICS GROUP		WO# PT# HSL-CD4
			DRAWING NUMBER 14-4514-15